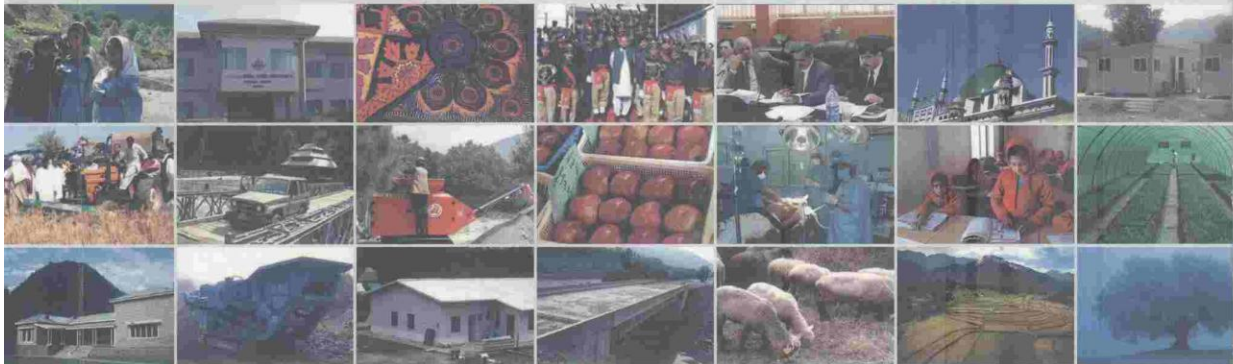


Azad Government of the State of Jammu and Kashmir

Green & Skilled Kashmir



AZAD KASHMIR AT A GLANCE



2007

Statistics Section
Planning & Development Department
Muzaffarabad

Contents

Development Scenario.....	2-8
Basic Facts.....	2-8
■ ✓ Geographical Features.....	9
■ ✓ Area and Population.....	10-14
■ ✓ Administrative Setup.....	15-16
■ ✓ Agriculture.....	17-21
■ ✓ Livestock.....	22-24
■ ✓ Forest.....	25
■ ✓ Power.....	26-27
■ ✓ Roads and Communications.....	28
■ ✓ Transport.....	29
■ ✓ Telecommunication and Postal Facilities.....	30-33
■ ✓ Physical Planning and Housing.....	34
■ ✓ Education.....	35-46
■ ✓ Information Technology / AJK TEVTA.....	47-48
■ ✓ Social Welfare and Women Development Department.....	49-50
■ ✓ Health.....	51-52
■ ✓ Industries and Minerals.....	53-54
■ ✓ Police.....	55
■ ✓ Tourism.....	56-60
■ ✓ Development Outlays.....	61
■ ✓ AJK development expenditure for the year 2006 - 07.....	62-63
■ ✓ Budget 2007 - 2008.....	64
■ ✓ Vital Statistics.....	65
Damages Post Earthquake 2005.....	66-73
Progress of Reconstruction and Rehabilitation Programmes in AJK.....	74-79



Foreword

It is indeed a great pleasure to bring out "AJ&K at a Glance" 2007-08. This document contains AJ&K brief history and important data about socio economic picture of the State and reflects on development over the last one year. AJ&K is blessed with abundant natural resources i-e water, mines/mineral, forests, places of tourist attractions and above all energetic and educated youth. The present government realizing this asset has taken a number of initiatives to exploit the potential on sustainable basis towards welfare of the people. The "Green & skilled Kashmir" vision by the Prime Minister AJ&K reflects the aspirations of the people and resolve of the government to ameliorate the socio economic conditions in the State. Highest priority has been assigned to Hydro power projects with support from Federal Government. The people of AJ&K acknowledge with thanks the generous and continue support extended by the Government of Pakistan despite prevalent resource constraints due to energy & food crisis.

I take this opportunity to express my gratitude to all those who contributed towards compilation of this document, specially Mr. Bashir Ahmed Ch., Chief Statistics and Mr. Muhammad Rahees Khan, Planning Officer, statistics section deserve appreciation who put in extra effort to improve the quality of the document. I am also grateful to Save the Children UK for their assistance in organizing & printing the material.

I hope this book will prove to be an informative and useful reference document for AJ&K government departments' researchers, scholars, planners and all others who may wish to benefit. I look forward for further improvement and welcome any suggestions in this regard.

Muhammad Yousaf
Additional Chief Secretary (Dev.)

Muzaffarabad, August 2008

Introduction

Azad Jammu and Kashmir lies between longitude 73° - 75° and latitude of 33° - 36° and comprises of an area of 5134 Square Miles (13,297 Square Kilometers).

The topography of the area is mainly hilly and mountainous with valleys and stretches of plains. Azad Kashmir is bestowed with natural beauty having thick forests, fast flowing rivers and winding streams. The main rivers are Jehlum, Neelum and Poonch. The climate is sub-tropical highland type with an average yearly rainfall of 1300 mm. The elevation from sea level ranges from 360 meters in the south to 6325 meters in the north. The snow line in winter is around 1200 meters above sea level while in summer, it rises to 3300 meters.

According to the 1998 population census the state of Azad Jammu & Kashmir had a population of 2.973 million, which is estimated to have grown to 3.682 million in 2007. Almost 100% population comprises of Muslims. The Rural: urban population ratio is 88:12. The population density is 277 persons per Sq. Km. The literacy rate which was 55% in 1998 census has now risen 64%. Approximately the infant mortality rate is 56 per 1000 live births, whereas the immunization rate for the children under 5 years of age is more than 95%.

The majority of the rural population depends on forestry, livestock and agriculture and non-formal employment to eke out its subsistence. Average per capita income has been estimated to be 908 * US\$. Unemployment rate ranges from 6.0 to 6.5%. In the line with the national trends, indicators of social sector, particularly health and population have not shown much proficiency. Efforts have been made during the recent past to make up this deficiency, so that the fruits of development can be brought to the door step of common man.

Area under cultivation is around 166433 hectares, which is almost 13% of the total Geographical area out of which 92% of the cultivable area is rain-fed. About 84% households have very small land-holdings between one to two acres. Major crops are maize, wheat & rice whereas minor crops are grams, pulses (red kidney beans),

* Economic survey of Pakistan 2006-2007.

Introduction

Azad Jammu and Kashmir lies between longitude 73° - 75° and latitude of 33° - 36° and comprises of an area of 5134 Square Miles (13,297 Square Kilometers).

The topography of the area is mainly hilly and mountainous with valleys and stretches of plains. Azad Kashmir is bestowed with natural beauty having thick forests, fast flowing rivers and winding streams. The main rivers are Jehlum, Neelum and Poonch. The climate is sub-tropical highland type with an average yearly rainfall of 1300 mm. The elevation from sea level ranges from 360 meters in the south to 6325 meters in the north. The snow line in winter is around 1200 meters above sea level while in summer, it rises to 3300 meters.

According to the 1998 population census the state of Azad Jammu & Kashmir had a population of 2.973 million, which is estimated to have grown to 3.682 million in 2007. Almost 100% population comprises of Muslims. The Rural: urban population ratio is 88:12. The population density is 277 persons per Sq. Km. The literacy rate which was 55% in 1998 census has now risen 64%. Approximately the infant mortality rate is 56 per 1000 live births, whereas the immunization rate for the children under 5 years of age is more than 95%.

The majority of the rural population depends on forestry, livestock and agriculture and non-formal employment to eke out its subsistence. Average per capita income has been estimated to be 908 * US\$. Unemployment rate ranges from 6.0 to 6.5%. In the line with the national trends, indicators of social sector, particularly health and population have not shown much proficiency. Efforts have been made during the recent past to make up this deficiency, so that the fruits of development can be brought to the door step of common man.

Area under cultivation is around 166433 hectares, which is almost 13% of the total Geographical area out of which 92% of the cultivable area is rain-fed. About 84% households have very small land-holdings between one to two acres. Major crops are maize, wheat & rice whereas minor crops are grams, pulses (red kidney beans),

* Economic survey of Pakistan 2006-2007

vegetable and oil-seeds. Major fruits produced in AJK are apple, pears, apricot and walnuts. Agriculture and livestock income ranges between 30-40% of household earnings. The remaining share comes from other sources including employment and business remittances, received by the families of Kashmiris. Reduced agriculture productivity has very adversely affected the traditional lifestyle and per capita income of the rural household.

About 42% of the total Geographical area (0.6 million hectares), is controlled by the Forest Department. The per capita standing volume and per capita forest area are 400 cft. and 0.5 sft. Annual wood demand is 1.65 million cubic meters and sustainable production is 1.89 million cubic meters. The local communities have traditional rights in terms of use of the forests and on an average three trees are burnt by one household every year for the fuel-wood requirements in the absence of alternate sources. Similarly about 5 trees on average are required to construct a house for which the wood roofs have to be replaced after every 8-10 years.

Azad Kashmir has a parliamentary form of Government under own constitution, namely Azad Jammu & Kashmir Act 1974. The President of Azad Jammu and Kashmir is the Constitutional Head of the State, while the Prime Minister, supported by a council of Ministers, is the Chief Executive. Azad Kashmir has its own legislative assembly comprising 41 directly and 8 indirectly elected members, a member each from Technocrats, Mashaikhs, Overseas Kashmiris and 5 female members. The AJ&K has its institutions of Supreme Court and High Court.

Lists of Presidents, Prime Ministers and Chief Executives are given as follows:

Presidents of Azad Kashmir

1.	Sardar Muhammad Ibrahim Khan	24 October 1947 to 29 May 1950
2.	Captain (R) Syed Ali Ahmed Shah	30 May 1950 to 3 Dec, 1951
3.	Mir Waiz Molana Muhammad Yousaf Shah	4 December, 1951 to 19 June, 1952
4.	Colonel (R) Sher Ahmed Khan	20 June, 1952 to 30 May, 1956
5.	Mir Waiz Molana Muhammad Yousaf Shah	31 May, 1956 to 7 Sep, 1956
6.	Sardar Muhammad Abdul-Qayyum Khan	8 Sep, 1956 to 13 April, 1957
7.	Sardar Muhammad Ibrahim Khan	14 April, 1957 to 14 May, 1959
8.	Mr. K.H. Khursheed	15 May, 1959 to 15 August, 1964
9.	Khan Abdul Hameed Khan	16 August, 1964 to 17 Oct, 1968
10.	Brigadier (R) Abdur-Rahman	18 Oct, 1968 to 10 Nov, 1970
11.	Sardar Muhammad Abdul-Qayyum Khan	11 Nov, 1970 to 16 April, 1975
12.	Sheikh Manzar Masaud	17 April, 1975 to 4 June, 1975
13.	Sardar Muhammad Ibrahim Khan	5 June, 1975 to 31 Oct, 1978
14.	Brigadier Mohammad Hayat Khan	Nov, 1978 to 31 Jan, 1983
15.	Major General (R) Abdur-Rahman	1 Feb, 1983 to 30 Sep, 1985
16.	Sardar Muhammad Abdul-Qayyum Khan	1 Oct, 1985 to 12 Aug, 1991
17.	Sardar Sikandar Hayat Khan	12 August, 1991 to 12 May, 1996
18.	Abdul Rasheed Abbasi	12 May, 1996 to 26 Aug, 1996
19.	Sardar Ibrahim Khan	26 August, 1996 to 31 July, 2001
20.	Sardar Muhammad Anwar Khan	1 August, 2001 to 26 July, 2006
21.	Raja Zulqurnain Khan	25 August, 2006 to (continued)

Prime Ministers of Azad Kashmir

1.	Sardar Muhammad Ibrahim Khan	14 Oct, 1947 to 23 Oct, 1947
2.	Khan Abdul Hameed Khan	5 June 1975 to 11 Aug, 1977
3.	Sardar Sikandar Hayat Khan	June, 1985 to 29 June 1990
4.	Mumtaz Hussain Rathoor	29 June 1990 to 29 July 1991
5.	Sardar Muhammad Abdul-Qayyum Khan	29 July 1991 to 30 July 1996
6.	Barrister Sultan Mehmood Choudhery	30 July, 1996 to 24 July 2001
7.	Sardar Sikandar Hayat Khan	24 July 2001 to 23 July 2006
8.	Sardar Attique Ahmed Khan	24 July 2006 - (continued)

Chief Executives of Azad Kashmir

1.	Major General (R) Abdul Rehman	12 August 1977 to 31 Oct, 1977
2.	Brigadier (R) Mohammad Hayat Khan	1 Feb, 1977 to 31 Jan, 1983
3.	Major General (R) Abdul Rahman	1 Feb, 1983 to 3 Sep, 1985

Administration

Azad Kashmir is divided into three divisions (Muzaffarabad, Mirpur & Poonch) and eight administrative districts with Muzaffarabad as the capital of the state. The Muzaffarabad Division comprises of Muzaffarabad and Neelum, Poonch Division comprised of Bagh, Poonch & Sudhnuti districts whereas Mirpur Division are districts Mirpur, Kotli & Bhimber. There are 24 subdivisions. The people's participation in the political and socio economic development is ensured through the elected institutions of AJK Legislative Assembly with 41 directly elected members and AJK Council with six elected members.

Economic Development

In 1947, at the time of partition, the economy in Azad Jammu and Kashmir was on subsistence level but the determination to develop the area was there. It was in early 60's when economic development of the area started in earnest. Despite financial constraints, successive governments made good efforts in laying down a proper path for the development of the area.

I. Physical Infrastructure

Roads

Roads and air transport are the only mode of transportation in Azad Jammu and Kashmir. The present road length and its comparison with the position in 1947 is given below: -

Road Length (Kms)

Year	Metalled	Fair-weather	Total	Road Density	
				AJ&K	Pakistan
1947	100	165	265	--	--
2007	5461	5844	11405	0.41	0.32

Airports

The Government of Azad Jammu and Kashmir in collaboration with the Civil Aviation Authority of Pakistan has constructed two small airports in Muzaffarabad and Rawalakot cities in order to provide easy and fast mode of travel (Flights presently suspended).

Power

At present, the installed Grid capacity is 390.30 MVA. About 20242 km transmission lines have been extended to 1629 villages out of a total of 1646 villages and about 386047 consumers have been provided with power connections. The per capita electricity delivered for consumption in Azad Kashmir is 385 KWH and within next three years 100% population of AJK is planned to be provided power connections. At the time of independence, power facility was practically non-existent in Azad Jammu and Kashmir. The Government lays great emphasis on generating electricity in order to meet the growing domestic as well as industrial requirements. It has been planned to launch a comprehensive programme for constructing a number of small hydro stations and six power stations to exploit this vast potential.

II. Social Infrastructure

Health Facilities

Health coverage in Azad Jammu & Kashmir is still inadequate. There are approximately 1820 hospital beds available in the area average one bed per 2000 population. The total number of doctors, including administrative doctors, health managers & dentists is 675 out of which there are 405 medical officers, 64 dental surgeons, 159 specialists and 47 health managers giving an average of 0.187 per 1000 population in respect of doctors, 0.112 Per 1000 Population in respect of medical officers, 0.018 per 1000 Population in respect of dentists, 0.044 per 1000 Pop. in respect of specialists and 0.013 per 1000 pop. in respect of health managers, where as only 30 hospital beds & 11 dispensaries were available in the area at the time of independence.

Education

Education has been a priority of the Govt. of Azad Jammu & Kashmir as about 26% of its total recurring budget besides 8 % of the total development budget is allocated to this sector. As a result of this substantial investment, AJ&K's literacy rate is 64% which is significantly higher than the national average of Pakistan. At present the gross enrolment rate at primary level is* 95% for boys and 88% for girls (between the age of 5-9 years). *Includes the enrolment of private schools.

Piped Water Supply

At the time of independence, availability of piped water supply was non-existent but significant progress has now been made in this regard. Presently 71% of the urban population and 67% of rural population has been provided with a piped water supply through house connections and public stand posts.

(III) Investment Opportunities in Azad Kashmir

The state of Azad Jammu & Kashmir by virtue of its topography, meteorology, hydrology & administrative setup provides huge opportunities to invest in various sectors. Keeping in view the investment potential in AJK, the Government is encouraging investment in the following sectors.

Industrial Investment

The Government has adopted the Industrial policy of Federal Government according to which all type of industries are allowed to be established in the territory of AJK except Arms & Ammunition, Security printing, explosive material and Radioactive material. In order to accelerate the pace of development the department of Industries has established 6 Industrial Estates in various districts of Azad Kashmir with basics infrastructure like roads, water supply, sewerage system and telephonic & electricity facilities. The number of medium & large scale Industries which have all ready been established in different districts of Azad Kashmir is 1465.

* including the enrolment in private schools

In view of the localize requirement of AJK, there is huge potential for Industries like Food, Ready made garments, Furniture and Plastic products in the area. In order to boost the Industrial Production in AJK, the Govt. is providing incentives to the industrialists including concession in different taxes and providing the energy on cheaper rates to run the industries for first five years. It will be advisable that detailed feasibility of Industrial products must be carried out for making final decisions of investment.

Development of cottage and Kashmiri Handicrafts

There are many investment opportunities available in almost all the small and traditional handicrafts of Kashmir. Azad Kashmir Small Industries Corporation (AKSIC) established in 1992, in an official body is committed to pro more the development of handicrafts and in turn the economic betterment of the working development of handicraftsmen. AKSIC does not only provide education and assistance to working craftsman in the field of designing but also in quality control and marketing of the products. Equipped with necessary God gifted natural resources and manned with requisite expertise, the AKSIC committed to honour the buyers preferences and requirement in export trade offers most generous cooperation all the time.

Mineral Resources

The Geological environment of AJK is comprising generally 3 types of rocks i.e. Sedimentary, Igneous and Metamorphic. The Industrial minerals and base metals are found in all of 3 rocks spreading all over the AJK territory. In AJK mineral exploration activities started in 1973 by AKMIDC, a state owned corporation and emphasis was laid on assessment of potential economic deposits and an analysis of value of the different minerals discovered in the area so far amount to 137.915 million tons.

Hydro Power Generation

Up to 1973-74 electricity facility was available to few villages of District Muzaffarabad & Mirpur. In 1973-74, a phased program was planned to provide electricity to urban & rural population, which is being continued. Under this program, several schemes have been implemented through which electricity distribution network has been expanded up to 98% population of rural areas

of AJ&K. Approximately 3,87,000 consumers have been provided service connections under this program.

Against revised ADP 2006-07 allocation of Rs. 630.000 million was utilized for installation of poles and transformers, through which 1,35,000 people of AJ&K were benefited. Several mini hydel projects are at implementation stage. With the completion of these projects, hydro power generation capacity would be increased up to 50 MW in AJ&K.

AJ&K has a potential of generation of 5000 MW of Hydro Power. The Hydel Power projects in AJK under implementation are:-

AJ&K has an identified potential of generation of 5000 MW of Hydro power against an estimated total of 15000 MW. The Hydro Power projects in AJK under implementation are:-

Private Sector

- Rajdhani Hydro Electric Project 132 MW District Kotli
- New Bong Hydro Electric Project 84 MW District Mirpur
- Bat Dara Hydro Electric Project 10.2 MW District Muzaffarabad
- Hotteri Hydro Electric Project 5.4 MW District Muzaffarabad

Public Sector

- Battar Hydro Electric Project 4.8 MW District Bagh.
- Sharian Hydro Electric Project 3.2 MW District Muzaffarabad
- Sharda Hydro Electric Project 2.0 MW District Neelum
- Dhanan Hydro Electric Project 1.7 MW District Kotli

WAPDA (Power Sector)

- Neelum Jhelum Hydro Electric Project 969 MW AJK, allocation for this project is 10000.00 million in 2007-08.
- Mangla Dam raising project

Geographical Features

Area	5134 Sq. Miles 13297 Sq Km. 1.330 Million Hectors 3.286 million Acres
Longitude Latitude	73° ~ 75° 33° ~ 36°
Topography	Mainly hilly and Mountainous with Valleys and Plains at some places.
Climate Temperature	Sub-tropical highland type Minimum 45.2 °C Maximum -2.6 °C
Rainfall	1300 mm on the average
Elevation from sea	
Range from South	360 meters
Range from North	6325 meters
Snow Line	
in Winter around	1200 meters
in Summer around	3300 meters
Main Rivers	Jhelum , Neelum & Poonch

Area & Population 2007

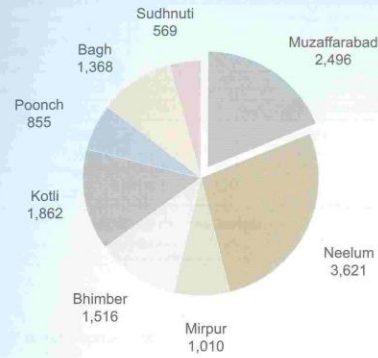
Total Area of Azad Jammu & Kashmir	13297 Sq. Kms (5134 Sq. Miles)
Total Population of Azad Jammu & Kashmir*	36,82,000 (3.682Million)

District-wise Area, Population, Density, Growth Rate & Household Size in Azad Kashmir

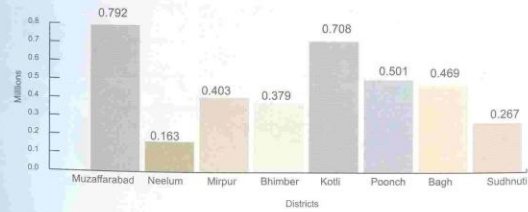
District	Area (Sq. Kms)	Population Census 1998 (Millions)			Projected Population 2007	Density in 2007 (Persons/Sq. Km)
		Population	Growth Rate	Household Size		
Muzaffarabad	2496	0.620	2.80 %	7.1	0.792	317
Neelum	3621	0.126	2.80 %	7.1	0.163	45
Mirpur	1010	0.334	2.09 %	6.8	0.403	399
Bhimber	1516	0.302	2.60 %	6.7	0.379	250
Kotli	1862	0.563	2.59 %	7.3	0.708	380
Poonch	855	0.411	2.24 %	7.6	0.501	586
Bagh	1368	0.393	2.00 %	7.4	0.469	343
Sudhnuti	569	0.224	1.99 %	7.3	0.267	469
Total	13297	2.973	2.41 %	7.2	3.682	277

* Projected on the basis of 1998 census.
Source: Population Census Organization Islamabad.

District-wise Area of AJ&K (Sq. Km.)



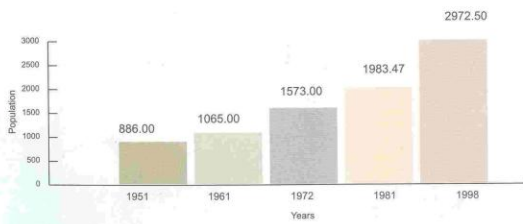
Projected Population of AJ&K 2007



Population and Intercensal Increase since 1951 to 1998

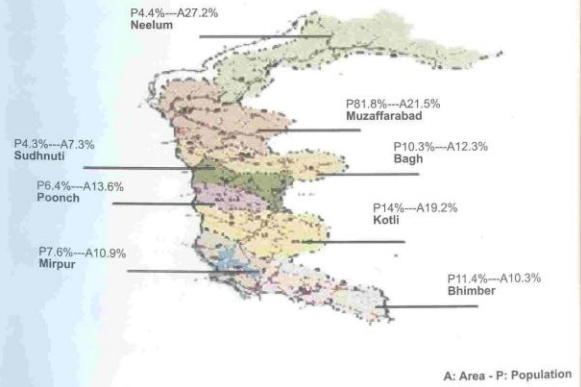
Description	1951	1961	1972	1981	1998
Population (Thousand)	886	1065	1573	1983.47	2972.50
Inter censal increase (Percent)	-	20.16	47.71	26.11	49.86
Commulative increase (Percent)	-	20.16	77.54	123.87	235.50
Average annual Growth rate (Percent)	-	1.87	3.43	2.74	2.41

Population and Intercensal Increase since 1951 to 1998



District-wise Area and Population of AJ&K

District	Area		Population	
	Sq. Kms	%	Projected population 2007	%
Muzaffarabad	2,496	18.8	0.792	21.5
Neelum	3,621	27.2	0.163	4.4
Mirpur	1,010	7.6	0.403	10.9
Bhimber	1,516	11.4	0.379	10.3
Kotli	1,862	14	0.708	19.2
Poonch	855	6.4	0.501	13.6
Bagh	1,368	10.3	0.469	12.3
Sudhnuti	569	4.3	0.267	7.3
Total AJ&K	13,297	100%	3.682	100%



A: Area - P: Population

Population Features

Projected Population of AJK (2007)	3.682
Male Population (2007)	1.850 Million
Female Population (2007)	1.832 Million
Sex Ratio (Number of Males Per 100 Females)	101
Average Family Size	7.2 Members (1998 Census)
Urban-rural Ratio	12 : 88 (1998 Census)
Growth Rate	2.41 % (1998 Census)
Population Density 1998 Census	258 Persons/Sq. Km.
Population Density 2007 Census	277 Persons/Sq. Km.
Literacy Rate	64 %
Religion	Almost 100% Muslims

* Projected on the basis of 1998 census
Sources: Population Census Organization - Islamabad.

Administrative Setup

Administrative Setup

Division	03
District	08
Sub Divisions/ Tehsil	24
Thana / Police Station	43
Development Authority	05
Markaz Council	31
Dehs Village	1,646
Municipal Committees	11
Municipal Corporation	02
Union Councils	183

Source: Local Government Board - Muzaffarabad.

Division, Districts and Sub-Divisions of AJ&K

Division	District	Sub-division
Muzaffarabad	Muzaffarabad	Muzaffarabad
		Hattian
		Pattika
	Neelum	Athmaqum
		Sharda
Poonch	Poonch	Rawalakot
		Hajira
		Abbaspur
	Bagh	Bagh
		Haveli
		Dhirkot
	Sudhnuti	Pallandri
		Mang
		Torarkhal
		Baloch
Mirpur	Mirpur	Mirpur
		Dudyal
	Bhimber	Bhimber
		Barnala
		Samahni
	Kotli	Kotli
		Fatehpur Thakiala
		Sehnsa
		Charhoi

Source: Local Government Board - Muzaffarabad.

Agriculture 2007

Agriculture 2007 in AJ&K Land Holding Areas in Hectares and Acres

	Hectares	Acres
1. Total Farm Area	275729	681327
Farm Area Per Family	0.96	2.38
Farm Area Per Capita	0.11	0.28
Average Farm Size	0.96	2.38
2. Area Under Cultivation	166432	411256
Cultivated Area Per Family	0.56	1.4
Cultivated Area Per Capita	0.06	0.16
3. Annual Cropped Area	247623	611878
Non-Irrigated Area	151015	373159
Irrigated Area	15416	38093
Area Under Maize	120408	297527
Area Under Wheat Cultivation	89347	220776
Area Under Rice Cultivation	2540	6277
Area Under Jawar Cultivation	19940	49272
Area Under Gram Cultivation	1895	4683
Area Under Vegetables Cultivation	684	1691
Area Under Fruits Cultivation	12809	31652

Source: Department of Agriculture and Livestock - Muzaffarabad.

Agriculture Land Holdings District-wise

District	Unit	Total Farm Area	Farm Area Per Family	Farm Area Per Capita	Estimated % of Household with Farm	Average Farm Size
Muzaffarabad/Neelum	Hectares	62890	0.84	0.08	35.61	0.84
	Acres	155401	2.10	0.20	88	2.10
Mirpur	Hectares	20444	1.08	0.14	18.61	1.08
	Acres	50517	2.68	0.35	46	2.68
Bhimber	Hectares	46008	1.48	0.17	33.18	1.48
	Acres	113685	3.68	0.44	82	3.68
Kotli	Hectares	66302	1.14	0.13	38.85	1.14
	Acres	163832	2.83	0.34	96	2.83
Poonch	Hectares	28735	0.73	0.08	39.25	0.73
	Acres	71005	1.81	0.22	97	1.81
Bagh	Hectares	35611	0.78	0.08	37.23	0.78
	Acres	87994	1.94	0.22	92	1.94
Sudhnuti	Hectares	15740	0.76	0.09	40.46	0.76
	Acres	38893	1.90	0.24	100	1.90
Total	Hectares	275729	0.96	0.11	34.80	0.96
	Acres	681327	2.38	0.28	86	2.38

Source: Department of Agriculture and Livestock - Muzaffarabad.

Area Under Cultivation

District	Unit	Area Under Cultivation	Cultivated Area Per Family	Cultivated Area Per Capita
Muzaffarabad	Hectares	34,259	0.48	0.05
	Acres	84,654	1.2	0.14
Mirpur	Hectares	15,394	0.80	0.10
	Acres	38,039	2.0	0.26
Bhimber	Hectares	29,992	0.97	0.11
	Acres	74,109	2.4	0.28
Kotli	Hectares	37,586	0.84	0.07
	Acres	92,875	1.6	0.19
Poonch	Hectares	21,025	0.52	0.04
	Acres	51,954	1.3	0.16
Bagh	Hectares	17,542	0.40	0.06
	Acres	43,346	1.0	0.11
Sudhnuti	Hectares	10,635	0.52	0.06
	Acres	26,279	1.3	0.16
Total	Hectares	166,433	0.56	0.06
	Acres	411,256	1.4	0.16

Source: Department of Agriculture and Livestock - Muzaffarabad.

Annual Cropped Area

District	Unit	Annual Cropped Area	Non Irrigated Area	Irrigated Area	Area Under Cultivation					
					Maize	Wheat	Rice	Jawar	Gram	Vegetables
Muz/ Neelum	H	41,730	27,828	6,430	30,302	6072	865	389	26	249
	A	103,116	98,764	15,888	74,875	15,005	2,138	962	64	616
Mirpur	H	23,800	13,956	1,438	3,503	12,620	768	5,810	817	82
	A	58,811	34,486	3,553	8,657	31,183	1,898	14,357	2,019	202
Bhimber	H	36,009	26,949	3,042	5,966	15,074	529	13,741	155	26
	A	88,310	66,590	7,518	14,742	37,248	640	33,953	383	65
Kotli	H	69,551	34,632	2,954	35,238	32,095	344	--	3,588	152
	A	171,861	85,575	7,299	87,074	79,307	851	--	1,625	375
Poonch	H	36,010	28,045	180	18,883	14,190	185	--	144	100
	A	38,984	51,509	446	46,661	35,063	457	--	357	248
Bagh	H	22,632	17,384	158	16,157	3,038	112	--	32	253
	A	55,924	42,955	391	39,925	7,506	277	--	79	130
Sudhnuti	H	18,158	9,421	1,213	10,357	6,258	6	--	63	22
	A	44,872	23,280	2,998	25,593	15,464	16	--	156	55
Total	H	247,623	151,015	15,416	120,408	89,347	2,540	19,940	1,895	684
	A	611,878	373,159	38,093	297,527	220,776	6,277	49,272	4,683	1,691

Source: Department of Agriculture and Livestock - Muzaffarabad.
H = Hectares A = Acres

Agriculture Statistics

Estimated % of House -hold with Farm	86%
Average Farm size (Total Farm Area/No. of Farms)	0.96
Total Farm Families	296,099
Total Farm Population	23,74248
Plant Protection Coverage	806 hac

Major Crops and Fruits

Major	Maize-Wheat-Rice
Minor	Grams-Pulses-Oil Seed Vegetable-Potatoes
Vegetable	Tomatoes-Beans-Potatoes-Spinach-Turnip-Karam
Fruit	Apples-Walnut-Apricots-Plums-Cherries

Farm Machinery in Usage (Public Sector)

Major Items	Government	Private	Total
Tractor	28	3046	3074
Buildozers	07	06	13
Threshers	28	1064	1092
Maize Sheller	2	150	152
Tube wells /Lift Pumps	25	1028	1053

Major Crops Production 2006 - 07

Name	Quantity (Metric Ton)
Maize	149,161
Rice	6,501
Wheat	95,000
Potato	2,435

Source: Department of Agriculture and Livestock - Muzaffarabad.

Livestock 2007

Livestock Poultry Production 2006 - 07

Name	Quantity (Metric Ton)
Beef and Mutton	18,600
Meat (Poultry)	6,000
Milk	5,03,000
Eggs	106,000

22

Azad Kashmir at a glance - 2007

Veterinary Facilities

Districts	Muzaffarabad/Neelum	Mirpur	Kotli	Bhimber	Sudhnuti	Poonch	Bagh	Total
Veterinary Hospital	4	3	2	3	1	2	2	17
Vet. Dispensaries A-(Class)	12	4	6	8	2	4	6	42
Vet. Dispensaries B-(Class)	18	9	7	15	2	7	8	66
Veterinary First Aid Center	32	16	13	26	5	18	19	129
Tehsil Level Extension Centers	37	25	18	32	10	21	24	167
Poultry Centers	1	1	-	1	-	1	1	5
Artificial Insemination Center	5	7	8	8	2	4	4	38
Disease Investigation Center	1	1	1	1	-	1	1	6

Sources: Department of Livestock and Veterinary, Muzaffarabad.

Livestock Population And Domestic Poultry Birds By Administrative Unit

Administration Unit	Number of Animals/Poultry Birds								
	Cattle	Buffaloes	Sheep	Goats	Camels	Horses	Mules	Asses	Poultry
Azad Jammu & Kashmir	545,239	576,734	2,246,03	1,352,267	665	9,655	4650	58,002	4,098,309
Muzaffarabad District	187,444	94,171	63,156	265,024	-	4,571	2372	12,643	968,747
Mirpur District	32,284	54,073	5,669	119,010	145	796	93	10,463	25,1632
Bhimber District	67,671	78,257	5,324	205,954	234	288	24	10,100	36,3619
Kotli District	82,979	157,256	33,397	362,564	286	330	74	20,210	78,7048
Bagh District	57,102	68,420	25,567	99,835	-	321	392	648	46,2414
Poonch District	31,568	75,962	30,151	124,844	-	167	239	1,351	64,4924
Pallandri District	39,992	47,466	13,963	118,787	-	170	120	1,539	46,6072
Neelum District	46,199	1,129	47,374	56,249	-	3,012	1336	1,048	15,3853

Sources: Department of Livestock and Veterinary, Muzaffarabad.

Azad Kashmir at a glance - 2007

23

Comparative Status of Livestock Census 1996 and 2006

Type of Animal	Livestock Census		Per Cent Variation in 2006 over 1996
	1996	2006	
A. Milk And Meat Animals			
(i) Total Cattle	528,481	545,239	(+) 03
Bullocks (3 years & above)	181,037	113,003	(-) 38
Cows (3 years & above)	210,537	264,188	(+) 25
In-milk Cows	148,745	155,934	(+) 05
Young stock (below 3 years)	136,910	168,051	(+) 23
Male	72,650	90,962	(+) 25
Female	64,260	77,089	(+) 20
(ii) Total Buffaloes	486,662	576,734	(+) 19
Male Buffaloes (3 years & above)	8,120	10,549	(+) 30
Female Buffaloes (3 years & above)	326,207	373,180	(+) 14
In-milk Buffaloes	234,930	263,187	(+) 12
Young Stock (below 3 years)	152,336	193,006	(+) 27
Male	46,648	61,566	(+) 32
Female	105,688	131,440	(+) 24
(iii) Total Sheep	210,368	224,603	(+) 07
Male (3 years & above)	27,427	29,556	(+) 08
Female (3 years & above)	122,088	129,825	(+) 06
Young Stock (below 1 year)	60,854	65,220	(+) 07
(iv) Total Goats	1,083,946	1,352,267	(+) 25
Male (3 years & above)	137,795	123,343	(-) 10
Female (3 years & above)	577,319	748,911	(+) 30
Young Stock (below 1 year)	368,832	480,011	(+) 30
B. Draft Animal			
(i) Camels	791	665	(-) 16
(ii) Horses	7,814	9,655	(+) 24
(iii) Mules	3,027	4,650	(+) 54
(iv) Asses	57,688	58,002	(+) 01
C. Domestic Poultry			
	3,847,007	4,098,309	(+) 07

Sources: Department of Livestock and Veterinary, Muzaffarabad.

Forest 2007

Total Geographical Area:	1.330 Million Hectares
	3.286 Million Acres

General Distribution of Land Utilization

Land Utilization	Area (Million)		% Of	
	Hec.	Acre	FDA*	TGA**
A) Area Controlled By Deptt. Of Forest	0.567	1.4	100	42.6
1) Area Under Productive Forests	0.379	0.936	66.8	28.5
I. Area Under Actual Forest				
Area Under Deodar	0.018	0.044	3.1	1.3
Area Under Kail	0.036	0.09	6.4	2.7
Area Under Fur	0.042	0.103	7.4	3.2
Area Under Pine	0.057	0.141	10.1	4.3
Area Under Broad Leaves Trees	0.001	0.002	0.1	0.1
Sub-total (I)	0.154	0.38	27.1	11.6
ii. Area Under Thinly Wooded Forests	0.225	0.556	39.7	16.9
2) Non Productive Area	0.188	0.464	33.2	14.1
B. Area Under Cultivation	0.173	0.427	-	13
C. Area Under Cultivable Waste	0.032	0.08	-	2.4
D. Area Under Uncultivable Waste	0.558	1.379	-	42
Total Geographical Area (A+B+C+D)	1.33	3.286	-	100

Forest Production

Total Annual Forest Production	6687000 Cft.
Annual Production Hectare	4.8 Cft.
Per Capita Forest Area	0.50 Sft.
Per Capita Standing Volume	400 Cft.
Per Capita Timber (Yield)	2.2 Cft.

* FDA - Forest Demarcated Area ** TGA - Total Geographical Area
Sources: Department of Forest, Muzaffarabad.

Power 2007

Electric Connections (Nos.)

District	Domestic	Commercial	Industrial	Total
Muzaffarabad	66,191	7,455	148	✓ 73,794
Neelum	6,043	719	2	✓ 6,764
Mirpur	73,821	15,711	706	✓ 90,238
Bhimber	42,124	4,694	328	✓ 47,146
Kotli	73,752	10,653	433	✓ 84,838
Poonch	49,913	4,212	70	✓ 54,195
Bagh	39,085	3,088	26	✓ 42,199
Sudhnuti	23,485	1,596	36	✓ 25,117
Total	374,414	48,128	1,749	424,291

Power Facilities

Districts	Mzd	Neelum	Mirpur	Kotli	Bhimber	Sudhnuti	Poonch	Bagh	Total
Small Hydal Station (Nos.)	3	3	-	-	-	-	-	-	6
Villages Electrified (Nos.)	542	52	231	230	208	55	125	186	1,629
Kilometer of HT Line	1,624	256	803	1,498	846	583	958	1,568	8,136
Kilometer of LT Line	3,908	421	1,203	3,100	1,085	980	1,591	1,539	13,827
Grid Station (Nos.)	3	-	5	2	1	2	4	2	19
Transform/Sub-Station (Nos.)	1,574	184	1,674	1,682	829	430	932	1,036	8,341
Consumers (Nos.)	73,794	6,764	99,238	84,838	47,146	25,117	54,195	42,199	424,291
Installed Grid Capacity (MVA)	64	-	130	65	52	9	53.30	17	390.30
Per Capita Electricity Delivered (Kwh)	301	69	1,087	408	404	175	259	232	367
Population Served (Million)	543,781	47,365	396,352	633,751	360,681	178,049	426,599	348,512	2,935,088

Sources: Department of Electricity, Muzaffarabad.

Roads and Communication 2007

Total Roads in AJ&K	11405 (Km.)
Metalled Roads	5461 (Km.)
Fair-weather Roads	5844 (Km.)
AJ&K Road Density	0.41
Pakistan Road Density	0.32

Roads and Communication 2007

District	(i)-Metalled Roads (Km.)			(ii)-Fair Weather Roads by PWD (Km.)			G. Total (i+ii)
	PWD	LG&RD	Total	PWD	LG&RD	Total	
Muzaffarabad	1,066	48	1,114	40	885	925	2,039
Neelum	290	-	290	131	182	313	603
Mirpur	634	65	699	-	427	427	1,126
Kotli	931	83	1,014	5	1,340	1,345	2,359
Bhimber	353	48	401	66	510	576	977
Sudhnuti	467	37	504	-	292	292	796
Poonch	652	53	705	105	1,057	1,162	1,867
Bagh	729	5	734	-	904	904	1,638
Total	5,122	339	5,461	347	5,597	5,944	11,405

Sources: (i) Public Works Department.
(ii) Local Government & Rural Development Department.

Transport 2007

Motor Vehicles Registered by Type

Districts	Mzd	Mirpur	Kotli	Neelum	Bhimber	Sudhnuti	Poonch	Bagh	Total
Buses	452	722	90	02	105	35	213	35	1,654
Trucks	833	2,303	405	09	210	22	419	133	4,334
Motor Cars	1,871	11,862	864	-	350	16	274	86	15,323
Taxi/Cab	153	34	105	-	2066	1	-	185	490
Motor Cycles/ Scooters	2,273	29,653	5,168	07	-	111	730	165	40,173
Rickshaws	434	1,957	01	-	70	-	-	-	2,392
Jeeps	2,396	1,278	820	08	45	69	602	274	5,517
Station Wagon	405	3,197	633	-	205	26	408	157	4,871
Tractors	26	930	365	-	252	03	125	16	1,670
Delivery Van	311	2,442	418	-	-	14	215	28	3,680
Government	120	12	03	-	-	-	1	-	136
Goods Vehicles									
Oil Tankers /Water Tankers	56	21	04	-	-	-	11	1	93
Pickups	325	2,242	210	-	-	-	56	452	3,285
Gas Tankers	-	-	-	-	-	-	-	-	-
Ambulances	25	16	05	-	-	-	5	5	56
Cranes	-	7	-	-	-	-	-	-	7
Truck Trailers	-	-	-	-	-	-	-	-	-
Dumper Trucks	-	50	-	-	-	-	-	-	50
Total	9,680	56,726	9,091	26	3303	365	3,455	1,085	8,3731

Sources: Excises and Taxations Department.

① Motor cars, jeeps and wagons
② Taxi and Rickshaws
③ Motor cycles and scooters
④ Trucks and vans
⑤ Buses
⑥ Others
⑦ Total

Telecommunication and Postal Facilities 2007

District	Telephone Exchanges	Installed Capacity	Working Connection	Public Call Offices (CSO, ED and Pay Phones)	MW Station
Muzaffarabad	18	22690	11985	265	9
Neelum	5	1332	937	37	0
Sudhnoti	14	6549	2554	32	2
Poonch	18	2305	13397	246	8
Bagh	18	17772	8550	157	5
Mirpur	15	38188	24049	156	17
Kotli	25	30538	17734	239	12
Bhimber	7	10356	5904	28	3
Q.Total	120	150420	85110	1160	56

Installed Capacity(Mobile)	225,000
Working Connection (Mobile)	105,500
Internet Facilities (DSL)	104

Sources: SCO Sector Head Quarter AJ&K, Muzaffarabad.

Detail of Digital Exchanges at AJ&K

District	Digital Exchange		Common Battery Exchange	
	Name of Exchange	Capacity	Name of Exchange	Capacity
Muzaffarabad	Muzaffarabad(old)	8,796	Khun bandi	180
	Muzaffarabad(New)	4,896	Langer Pura	150
	Garhi Dopatta	2,400	Shaheed Gali	50
	Kohala	1,140	Brarkot	50
	Hattian	688	Chattar Kalas	100
	Patikka	1,504	Danna Katachely	100
	Chikar	800	Khalan	200
	Chinari	800		
	Chakothei	336		
	Dhani Nosehri	400		
	Leepa	800		
Total	22,560		830	
Neelum	Athmukam	1,140	Kundal Shahi	150
	Jura	300	Kel	150
			Mirpura	200
	Total	1,440		500
Bagh	Bagh	4,512	Lohar Bela	15
	Ghazliabad	1,008	Piangi	25
	Mohri Farman Shah	1,140	Dhal Qazian	220
	Farward Kahota	2,220	Birpani	200
	Arja	1,008	Sudhan Gali	100
	Harigal	1,024	Chirala	120
	Dhirkot	3,144	Chamankot	260
	Rangla	480	Kharal Abbasian	100
	Maloot	1,008		
	Rera	828		
Total	16,372		1040	
Sudhnoti	Plandri	3,672		
	Nerian Sharif	2,400		
	Balooch	1,008		
	Total	7,080		
Bhimber	Bhimber	3,504		
	Smani Chowki	3,120		
	Barnala (Padhar)	3,000		

...Continued

Detail of Digital Exchanges at AJ&K

District	Digital Exchange		Common Battery Exchange	
	Name of Exchange	Capacity	Name of Exchange	Capacity
	Khadinabad	2,184		
	Khaliqabad	1,008		
	Palak	400		
	Total	13,216		
Poonch	Rawlakot	5,120	Tilroot	110
	Paniola	3,504	Rehara	210
	Datoot	480	Thorar	275
	Hajira	3,184	Ali Sojal	120
	Bandi Abbas Pur	3,072	Rakkar Dhar Bazar	250
	Khud Bazar	1,020	Natha Gala	170
	Jhika Gala	348	Donga Ghamir	120
	Chota Gala	1,932	Mong	260
	Barmong Khurd	480	Azad Pattan	150
	Dhar Drach	384	Tala Bari	100
	Topa Kherian	120	Garala	100
			Numb Gorah	110
			Dewan Gorah	220
			Betran	50
			Islam Pura	125
			Baral	170
			Sehr Hafizabad	100
		Tahlian	100	
	Total	19,644	2,740	
Mirpur	Mirpur Nangi	6,656	Dhandarkot	230
	Mirpur Hill	9,444	Moil	100
	Industrial Area	1,128	Pindi Jhunjoa	150
	Dudyal	3,624	Siakh	70
	Jatlan	4,008	Sokason	250
	Chakswari	2,040		
	Islamgarh	2,016		
	Mangla Hamlet	1,008		
	Pindi Suberwal	2,016		
	Khattar Dilawar	788		
Kakra Town	2,208			
	Total	34,936	800	

...Continued

Detail of Digital Exchanges at AJ&K

District	Digital Exchange		Common Battery Exchange		
	Name of Exchange	Capacity	Name of Exchange	Capacity	
Kotli	Kotli	7,776	Anderla Kotera	200	
	Khuiratta	3,288	Damas	200	
	Sarsawa	3,648	Fagosh	120	
	Nakial	2,064	Hullar	180	
	Nar	1,008	Karela	120	
	Sensa	3,144	Maneel	120	
	Tattapani	1,920	Panag Sharif	150	
	Sarhota-II	2,220	Phagwari	100	
	Charhoi	2,160	Qamrotee	150	
	Gul pur	1,080	Rajdhani	140	
	Doungi	500	Saloon	100	
	Barali	312	Sehr Mandi	200	
			Tarala	150	
		Total	29,120	1,930	

Postal Facilities

District	General Post Offices (GPOs)	Extra Departmental Branch Post Offices	Extra Departmental Sub Post Offices	Sub Post Offices	Head Post Offices
Muzaffarabad	01	36	--	19	--
Neelum	--	12	01	02	--
Sudhnoti	--	34	02	14	--
Poonch	01	48	02	19	--
Bagh	01	42	04	12	--
Mirpur	01	40	02	26	--
Kotli	01	48	04	15	--
Bhimber	--	29	01	14	01
Total	05	289	16	121	01

Source: Office of the DY, GP Sector Head Quarter AJ&K, Muzaffarabad.

Physical Planning and Housing 2007

Piped Water Supply

Type	Mzd	Neelum	Mirpur	Kotli	Bhimber	Sudhnuti	Poonch	Bagh	Total
Piped Water Supply in Urban Areas									
Houses within Municipal Town Limits (No.)	15,000	1,000	21,270	7,200	3,500	4,000	5,000	5,000	61,970
Piped Water Facility (No.)	12,958	500	18,094	6,000	2,150	1,000	2,000	1,590	44,292
% Cover	86	50	85	83	63	25	40	32	71
Piped Water Supply in Rural Areas									
Total Villages (No.)	478	173	164	227	223	65	98	208	1,646
Total Population (Million)	0.792	0.163	0.403	0.708	0.379	0.267	0.501	0.469	3.682
Population Served (Million)	0.516	0.081	0.332	0.497	0.07	0.402	0.309	0.258	2.402
%Cover	67	51	84	72	83	39	63	56	67

Sources: CDO, Muzaffarabad.

Education 2007

University of Azad Kashmir

Location of the Campus: Muzaffarabad, Rawalakot, Kotli & Mirpur

Name of Faculties	Number of Students													Total	
	B.A		B.Sc		B.Sc Hons.		M.A		M.Sc		M.Phil		P.H.D		
	M	F	M	F	M	F	M	F	M	F	M	F	F		
Muzaffarabad Campus															
Statistics	-	-	-	-	-	-	-	-	41	34	-	-	-	-	75
Mathematics	-	-	-	-	-	-	-	-	51	31	-	-	-	-	82
Chemistry	-	-	-	-	-	-	-	-	53	91	5	1	5	1	158
Physics	-	-	-	-	-	-	-	-	58	33	-	-	-	-	91
Geology	-	-	-	-	214	-	-	-	27	-	1	-	1	-	243
Botany	-	-	-	-	-	-	-	-	43	28	4	3	-	-	178
Zoology	-	-	-	-	-	-	-	-	33	66	-	-	-	-	99
CS & IT	-	-	-	70	27	-	-	-	36	18	-	-	-	-	151
Economics	-	-	-	-	-	-	-	-	36	83	-	-	-	-	119
English	-	-	-	-	-	-	-	-	26	76	-	-	-	-	102
Art & Designing	-	-	-	-	8	21	-	-	-	-	-	-	-	-	29
Law	-	-	-	84	19	-	-	-	-	-	-	-	-	-	103
Total	0	0	154	46	222	21	0	0	404	460	10	4	6	1	1,430
Faculty of Agriculture Rawlakot															
Agriculture	-	-	-	-	120	-	-	-	-	-	29	-	12	-	161
Faculty of Administration of Kotli															
Administrative Science	-	-	222	70	-	-	-	-	110	34	15	-	-	-	451
Institutes of Mirpur															
Islamic Studies	-	-	-	-	14	45	-	-	-	-	-	-	-	-	59
Home Economics	-	-	18	33	-	-	-	-	-	-	-	-	-	-	51
Engineering & Technology	-	-	21	13	178	-	-	-	20	9	25	-	4	-	277
G.Total	0	0	415	162	356	66	0	0	534	503	79	4	22	1	2,429

... continued

Name of Faculties	Staff Position												Total
	Professor		Associate		Demonstrator		Assistant Professor		Lecturer		Non Teaching Staff		
	M	F	M	F	M	F	M	F	M	F	M	F	
Muzaffarbad Campus													
Statistics	-	-	-	-	-	-	1	-	3	1	2	1	8
Mathematics	2	-	-	-	-	-	4	-	2	4	4	-	16
Chemistry	3	-	3	-	-	-	1	1	-	3	20	-	20
Physics	3	-	1	-	-	-	3	3	4	1	10	-	25
Geology	5	-	4	-	-	-	6	-	2	1	18	-	36
Botany	1	-	4	1	-	-	1	-	1	1	10	-	19
Zoology	3	-	4	-	-	-	-	1	1	2	8	-	19
CS & IT	-	-	1	-	-	-	4	-	2	2	16	1	26
Economics	1	-	-	-	-	-	1	0	3	3	6	-	14
English	1	-	-	-	-	-	3	1	1	3	5	-	14
Art & Designing	-	-	-	2	-	-	-	2	-	6	2	5	17
Law	10*	-	2*	-	-	-	-	-	-	-	2	0	14
Total	29	0	19	3	0	0	24	8	19	27	103	7	228
Faculty of Agriculture Rawlakot													
Agriculture	15	-	5	-	-	-	9	-	6	5	81	-	121
Faculty of Administration of Kotli													
Administrative Science	2	-	1	-	-	-	13	1	14	3	55	1	90
Institutes of Mirpur													
Islamic Studies	-	-	1	-	-	-	1	1	1	2	12	1	19
Home Economics	-	1	-	2	-	-	-	8	-	6	15	8	40
Engineering & Tech.	4	-	4	1	-	-	6	-	18	-	70	-	103
G.Total	50	1	30	6	0	0	53	18	58	43	336	17	601

Source: Directorate of Planning & Research, Muzaffarbad.

* = Visiting Professors

District wise Number of Government Institutions by Level (Year 2006 - 07)

District	Schools							Intermediate					Total	
	Mosque	Industrial School	Literacy Centre	Village Workshop	Primary	Middle	High	Higher Secondary	Intermediate	Degree	Post Graduate	College of Education		Polytechnic
Bagh	190	-	-	359	193	95	7	6	4	2	1	-	-	857
Bhimber	198	-	-	1	253	107	55	4	7	6	1	-	-	632
Kotli	212	-	-	1	552	166	100	6	13	9	-	-	-	1,059
Mirpur	106	-	-	2	309	98	80	3	7	8	1	1	-	615
MZD	244	-	2	2	673	202	120	11	9	5	2	-	-	1,270
Neelum	56	-	-	-	158	34	26	-	4	2	-	-	-	280
Poonch	151	-	-	2	421	152	98	10	6	5	2	-	-	847
Sudhnoti	134	1	-	1	222	81	39	1	9	3	-	-	1	492
Total	1,291	1	2	368	2,781	935	525	41	59	40	7	1	1	6,052

District wise Number of Teachers of Government Schools of AJ&K

Designation	Gender	Bagh	Bhimber	Kotli	Mirpur	Mzd	Neelum	Poonch	Sudhnoti	Total
Primary Teachers	Male	886	572	917	607	1,133	196	990	468	5,769
	Female	1141	757	1,466	726	1,868	459	941	532	7,890
	Total	2,027	1,329	2,383	1,333	3,001	655	1,931	1,000	13,659
Junior Teachers	Male	431	324	428	384	539	97	546	207	2,956
	Female	746	425	822	478	1,017	251	669	359	4,767
	Total	1,177	749	1,250	862	1,556	348	1,215	566	7,723
Senior Teachers	Male	292	204	263	278	362	51	316	109	1,875
	Female	493	297	547	340	704	159	490	238	3,268
	Total	785	501	810	618	1,066	210	806	347	5,143
Total	Male	1,609	1,100	1,608	1,269	2,034	344	1,852	784	10,600
	Female	2,380	1,479	2,835	1,544	3,589	869	2,100	1,129	15,925
G.Total		3,989	2,579	4,443	2,813	5,623	1,213	3,952	1,913	26,525

Source: Directorate of Education, Muzaffarbad.

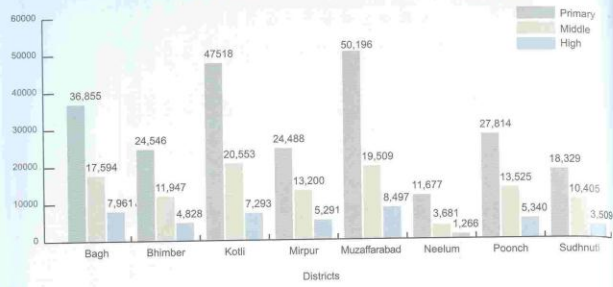
District-wise and Class-wise Enrolment of Government Institutions for the Year 2006 - 2007

District	Gender	Primary (05-09 years)							Middle (10-12 years)							High (13-14 years)			Total
		Class-I	Class-II	Class-III	Class-IV	Class-V	Class-VI	Total	Class-VII	Class-VIII	Class-IX	Class-X	Total	Class-XI	Class-XII	Total			
Bagh	Male	4,080	4,276	4,365	4,240	4,168	4,159	21,159	3,980	3,484	3,129	10,593	3,129	10,593	2,151	4,748	36,500		
	Female	3,471	3,236	3,143	2,978	2,868	2,624	15,086	2,624	2,253	2,124	7,001	1,861	1,352	3,213	25,910			
Bhimber	Male	2,825	2,638	2,760	2,709	2,701	13,633	2,549	2,153	1,944	6,646	1,741	1,065	2,806	23,085				
	Female	2,253	2,094	2,145	2,284	2,157	10,913	2,042	1,767	1,492	5,301	1,237	785	2,022	18,236				
Kotli	Male	5,998	5,919	5,751	5,642	5,619	28,539	4,555	3,676	3,477	11,908	2,836	1,616	4,452	45,299				
	Female	3,958	3,860	3,661	3,639	3,461	18,579	3,329	2,912	2,404	8,645	1,663	1,178	2,841	30,065				
Mirpur	Male	2,207	2,245	2,264	2,343	2,288	11,347	2,242	2,042	1,850	6,134	1,616	1,023	2,639	20,120				
	Female	2,672	2,587	2,592	2,738	2,552	13,141	2,713	2,340	2,013	7,096	1,647	1,005	2,652	22,859				
Muzaffarabad	Male	6,982	6,070	5,954	5,688	5,682	30,396	4,866	4,408	4,006	13,310	3,452	2,598	6,050	49,756				
	Female	4,729	4,341	3,973	3,535	3,195	19,773	2,167	2,097	1,935	6,199	1,430	1,017	2,447	28,419				
Neelum	Male	1,873	1,537	1,522	1,486	1,266	7,684	1,038	871	809	2,718	563	434	997	11,399				
	Female	1,003	871	764	701	654	3,993	444	289	230	963	176	93	269	5,195				
Poonch	Male	2,533	2,565	2,651	2,984	2,885	13,618	2,653	2,372	2,224	7,249	1,697	1,206	2,893	23,760				
	Female	2,946	2,826	2,684	2,818	2,922	14,196	2,284	2,049	1,843	6,276	1,461	986	2,447	22,919				
Sudhnutli	Male	1,700	1,854	1,832	2,227	2,151	9,764	2,017	1,924	1,962	5,903	1,302	835	2,137	17,804				
	Female	1,599	1,703	1,683	1,859	1,721	8,565	1,504	1,357	1,641	4,502	831	541	1,372	14,439				
Sub-total	Male	28,198	27,104	27,109	27,329	26,800	136,540	23,300	21,130	19,401	64,461	15,794	10,928	26,722	227,723				
	Female	22,631	21,518	20,645	20,532	19,530	104,856	17,107	15,064	12,782	44,953	10,306	6,957	17,263	168,042				

Student Class-wise Enrolment for the Year 2006 - 2007

District	Gender	Unlimited	Pre-primary	Class-1	Class-2	Class-3	Class-4	Class-5	Class-6	Class-7	Class-8	Class-9	Class-10	Total
Bhimber	Female	2,462	6,953	3,471	3,236	3,143	3,236	2,888	2,624	2,253	2,124	1,861	1,352	3,532
	Male	2,084	4,592	2,825	2,638	2,760	2,709	2,701	2,549	2,153	1,944	1,741	1,065	2,976
Kotli	Female	830	3,546	2,253	2,094	2,145	2,624	2,157	2,042	1,767	1,492	1,237	785	2,261
	Male	6,781	8,692	5,998	5,919	5,761	5,642	5,619	4,555	3,676	3,477	2,836	1,616	6,077
Mirpur	Female	3,166	6,503	3,958	3,860	3,661	3,639	3,461	3,329	2,912	2,404	1,663	1,178	3,973
	Male	1,667	3,572	2,207	2,245	2,264	2,343	2,288	2,242	2,042	1,850	1,616	1,023	2,525
Muzaffarabad	Female	634	3,552	2,672	2,587	2,592	2,738	2,552	2,340	2,013	7,096	1,647	1,005	2,704
	Male	7,038	14,163	6,982	6,070	5,954	5,688	5,682	4,866	4,408	4,006	3,452	2,598	7,056
Neelum	Female	1,985	9,284	4,729	4,341	3,973	3,535	3,195	2,167	2,097	1,935	1,430	1,017	3,966
	Male	2,616	2,743	1,873	1,537	1,522	1,486	1,266	1,038	871	809	563	434	1,675
Poonch	Female	1,392	1,757	1,503	871	734	701	654	444	289	230	176	93	834
	Male	2,063	5,459	2,533	2,984	2,885	2,653	2,372	2,224	7,249	1,697	1,206	986	3,128
Sudhnutli	Female	1,341	6,198	2,946	2,826	2,818	2,922	2,884	2,049	1,843	1,661	1,461	986	3,045
	Male	1,723	2,339	1,700	1,854	1,832	2,227	2,151	1,924	1,962	1,924	1,302	835	2,186
Sub Total	Female	19,935	23,598	15,999	17,003	16,833	18,599	17,211	15,044	13,567	16,441	8,311	5,411	18,733
	Male	27,935	51,184	28,198	27,104	27,109	27,329	26,800	23,300	21,130	19,401	15,794	10,928	30,884
Total	Female	13,745	41,311	22,631	21,518	20,615	20,532	19,530	17,107	15,064	13,782	10,306	6,957	22,911
	Male	41,800	91,315	58,929	48,822	47,724	47,861	46,330	41,037	36,194	33,183	26,100	17,885	52,676

Student Class-wise Enrolment for the Year 2006 - 2007



Gender and Level-wise Number of Colleges of AJ& K 2006-2007

District	Gender	Inter Colleges	Degree Colleges	Post Graduate Colletes	College of Education	Poly Technique	Total
Bagh	Male	3	2	1	1	-	6
	Female	3	2	1	1	-	7
Bhimber	Male	5	2	1	-	-	8
	Female	2	4	-	-	-	6
Kotli	Male	7	5	-	-	-	12
	Female	6	4	-	-	-	10
Mirpur	Male	4	3	1	1	-	9
	Female	3	5	-	-	-	8
Muzaffarabad	Male	6	4	1	-	-	11
	Female	3	1	1	-	-	5
Neelum	Male	3	1	-	-	-	4
	Female	1	1	-	-	-	2
Poonch	Male	1	3	1	-	1	6
	Female	5	2	1	-	-	8
Sudhnoti	Male	6	1	-	-	-	7
	Female	3	2	-	-	-	5
Total	Male	35	21	5	1	1	63
	Female	26	21	3	1	-	51
G.Total		61	42	8	2	1	114

Gender and Level-wise Number of Students of Colleges of AJ& K 2006-2007

District	Gender	Inter Colleges	Degree Colleges	Post Graduate Colletes	College of Education	Poly Technique	Total
Bagh	Male	429	585	1,227	-	-	2,241
	Female	674	888	1,210	-	-	2,772
Bhimber	Male	801	1,007	588	-	-	2,396
	Female	357	1,944	-	-	-	2,301
Kotli	Male	1,184	3,541	-	-	-	4,725
	Female	643	1,118	-	-	-	1,761
Mirpur	Male	1,073	1,002	2,368	74	-	4,517
	Female	740	2,963	-	-	-	3,703
Muzaffarabad	Male	1,197	968	1,381	-	-	3,546
	Female	390	529	1,382	-	-	2,301
Neelum	Male	436	159	-	-	-	595
	Female	52	144	-	-	-	196
Poonch	Male	129	1,134	530	-	200	1,993
	Female	729	1,040	1,006	-	-	2,775
Sudhnoti	Male	945	677	-	-	-	1,622
	Female	813	1,392	-	-	-	2,205
Total	Male	6,194	9,073	6,094	74	200	21,635
	Female	4,398	10,018	3,598	0	0	18,014
G.Total		10,592	19,091	9,692	74	200	39,649

Number of Teaching Staff of Colleges of AJK by Institution Gender 2006-2007

District	Gender	Inter Colleges	Degree Colleges	Post Graduate Colletes	College of Education	Poly Technique	Total
Bagh	Male	42	34	47	-	-	123
	Female	35	45	27	12	-	119
Bhimber	Male	54	42	29	-	-	125
	Female	18	71	-	-	-	89
Kotli	Male	96	139	-	-	-	235
	Female	70	75	-	-	-	145
Mirpur	Male	52	59	67	25	-	203
	Female	44	85	-	-	-	129
Muzaffarabad	Male	95	78	58	-	-	231
	Female	50	22	46	-	-	118
Neelum	Male	40	15	-	-	-	55
	Female	10	20	-	-	-	30
Poonch	Male	19	55	47	-	7	128
	Female	60	37	41	-	-	138
Sudhnoti	Male	78	39	-	-	-	117
	Female	44	38	-	-	-	82
Total	Male	476	461	248	25	7	1,217
	Female	331	393	114	12	-	850
G.Total		807	854	362	37	7	2,067

Private Institution, Enrolment (Stage) and Teacher NEC

Institutional Level	Institutions				Enrolment by Stage			Teachers		
	Boys	Girls	Mixed	Total	Boys	Girls	Total	Male	Female	Total
Primary	5	12	595	612	78,059	61,373	139,432	1,162	1,293	2,455
Middle	5	10	742	747	27,992	21,386	49,378	2,144	3,534	5,678
High	10	17	292	319	11,937	9,622	21,559	1,768	2,497	4,265
Higher Sec/ Inter Colleges	8	10	65	83	4012	3,585	7,597	711	601	1,312
Degree Colleges	2	5	6	13	476	1,363	1,839	67	85	152
Technical & Vocational Institution	2	27	19	48	1,077	1,698	2,775	75	82	157
Deeni Madaris	121	70	282	473	491	204	695	1,537	518	2,055
Total	153	151	2,001	2,295	124,044	99,231	223,275	7,464	8,610	16,074

Source: National Education Census 2007

Bagh

Institutional Level	Institutions				Enrolment by Stage			Teachers		
	Boys	Girls	Mixed	Total	Boys	Girls	Total	Male	Female	Total
Primary	-	-	117	117	9,392	7,319	16,711	163	277	440
Middle	-	2	80	82	2,740	2,294	5,034	201	373	574
High	-	2	38	40	1,894	1,522	3,416	240	271	511
Higher Sec/ Inter Colleges	1	2	5	8	328	470	798	41	31	72
Degree Colleges	-	-	1	1	53	376	429	9	8	17
Technical & Vocational Institution	-	6	-	6	-	201	201	1	7	8
Deeni Madaris	29	21	93	143	87	9	96	377	161	538
Total	30	33	334	397	14,494	12,191	26,685	1,032	1,128	2,160

Bhimber

Institutional Level	Institutions				Enrolment by Stage			Teachers		
	Boys	Girls	Mixed	Total	Boys	Girls	Total	Male	Female	Total
Primary	-	1	63	64	10,075	8,985	19,060	175	114	289
Middle	1	2	97	100	4,084	3,418	7,502	360	431	791
High	3	2	31	36	1,554	1,105	2,659	250	299	549
Higher Sec/ Inter Colleges	-	1	10	11	503	332	835	136	92	228
Degree Colleges	-	-	1	1	22	13	35	19	9	28
Technical & Vocational Institution	-	5	6	11	151	222	373	19	10	29
Deeni Madaris	5	1	7	13	-	-	-	67	2	69
Total	9	12	215	236	16,389	23,060	39,449	1,026	957	1,983

Kotli

Institutional Level	Institutions				Enrolment by Stage			Teachers		
	Boys	Girls	Mixed	Total	Boys	Girls	Total	Male	Female	Total
Primary	1	3	89	93	17,284	13,267	30,551	277	143	420
Middle	-	1	155	156	6,259	5,034	11,293	634	542	1,176
High	-	4	53	57	1,962	1,706	3,668	414	393	807
Higher Sec/ Inter Colleges	-	1	13	14	464	427	891	124	94	218
Degree Colleges	-	1	-	1	55	91	146	3	5	8
Technical & Vocational Institution	-	1	4	5	291	149	440	11	6	17
Deeni Madaris	9	3	19	31	24	25	49	90	21	111
Total	10	14	333	357	26,339	20,699	47,038	1,553	1,204	2,757

Mirpur

Institutional Level	Institutions				Enrolment by Stage			Teachers		
	Boys	Girls	Mixed	Total	Boys	Girls	Total	Male	Female	Total
Primary	1	1	31	33	10,967	8,646	19,613	45	118	163
Middle	1	3	132	136	4,087	3,003	7,090	276	899	1,175
High	1	-	47	48	1,865	1,311	3,176	243	485	728
Higher Sec/ Inter Colleges	2	3	8	13	1,070	505	1,575	85	71	156
Degree Colleges	2	-	2	4	201	103	304	27	21	48
Technical & Vocational Institution	1	2	6	9	497	232	729	30	6	36
Deeni Madaris	18	2	9	29	168	-	168	208	24	232
Total	26	11	235	272	18,855	13,800	32,655	914	1,624	2,538

Muzaffarabad/Neelum

Institutional Level	Institutions				Enrolment by Stage			Teachers		
	Boys	Girls	Mixed	Total	Boys	Girls	Total	Male	Female	Total
Primary	2	4	185	191	17,079	12,695	29,774	379	344	723
Middle	2	-	137	139	5,185	3,525	8,710	345	691	1,036
High	4	3	52	59	2,133	1,585	3,718	342	473	815
Higher Sec/ Inter Colleges	1	1	14	16	914	645	1,559	184	140	324
Degree Colleges	-	-	-	-	77	262	339	-	-	-
Technical & Vocational Institution	-	9	1	10	-	491	491	4	25	29
Deeni Madaris	43	25	112	180	154	99	253	577	188	765
Total	52	42	501	595	25,542	19,302	44,844	1,831	1,825	3,652

Poonch

Institutional Level	Institutions				Enrolment by Stage			Teachers		
	Boys	Girls	Mixed	Total	Boys	Girls	Total	Male	Female	Total
Primary	1	-	76	77	8,934	7,458	16,392	92	228	320
Middle	1	2	90	93	3,691	3,188	6,879	177	443	620
High	1	4	50	55	1,703	1,927	3,630	198	422	620
Higher Sec/ Inter Colleges	2	1	14	17	471	1,118	1,589	101	169	270
Degree Colleges	-	4	1	5	53	502	555	2	38	40
Technical & Vocational Institution	1	4	2	7	138	403	541	10	28	38
Deeni Madaris	14	14	31	59	58	30	88	168	85	253
Total	20	29	264	313	15,048	14,626	29,674	748	1,413	2,161

Sudhnuti

Institutional Level	Institutions				Enrolment by Stage			Teachers		
	Boys	Girls	Mixed	Total	Boys	Girls	Total	Male	Female	Total
Primary	-	3	34	37	4,328	3,003	7,331	31	69	100
Middle	-	-	51	51	1,946	924	2,870	151	155	306
High	1	2	21	24	826	466	1,292	81	154	235
Higher Sec/ Inter Colleges	2	1	1	4	262	88	350	40	4	44
Degree Colleges	-	-	1	1	15	16	31	7	4	11
Technical & Vocational Institution	-	-	-	-	-	-	-	-	-	-
Deeni Madaris	3	4	11	18	-	41	41	50	37	87
Total	6	10	159	135	7377	4,538	11,915	360	423	783

Information Technology 2007

Information Technology 2007

Educational Institutions	Activity	Nos.	Computer Instructors	Lab in charges
Degree Colleges	Computer Labs	35	35	35
Inter Colleges	Computer Labs	4	4	4
Higher Secondary School	Computer Labs	13	13	13
High School	Establishment of computer Labs	45	45	45
IT Youth Training Center		7	14	7
Govt. Employees IT Training Center		2	4	2
Youth Train	(Youth) Training	7,500	-	-
Govt. Employees Train	Govt. Employees IT Training Center	2,100	-	-

Source: Information Technology Board, Muzaffarabad.

Technical Education Institution AJKTEVTA

Name of Institution	Mzd	Neelum	Bagh	Poonch	Sudhnuti	Kotli	Bhimber	Mirpur	Total
Polytechnic	-	-	-	1	-	-	-	1	1
Vocational Training Institute (Male)	1	1	1	1	1	1	1	2	9
Vocational Youth Centers (Male)	1	-	1	-	1	1	1	-	5
Industrial Training Centers (Male)	1	1	-	-	-	-	-	-	2
Woman Industrial Schools (Female)	11	2	4	4	1	5	3	4	34
Multi Trade Centers	2	-	-	1	-	1	-	1	5
Vocational Youth Centers (Female)	1	-	-	-	1	1	-	1	4
Skill Development center (SDC)	-	-	-	-	-	-	-	-	42
Grand Total	17	4	6	7	4	9	5	9	102

Source: A.J.K TEVTA

Technical Education Institution (Small Industry)

Name of Institution*	Mzd	Neelum	Bagh	Poonch	Sudhnuti	Kotli	Bhimber	Mirpur	Total
Carpet weaving Development Center	2	-	1	1	1	-	-	-	5
Wood working/ Carving Development Center	-	1	1	1	-	1	-	-	4
Traditional Kashmiri Handicrafts (shawl Bafi) Development center	1	-	1	1	-	1	-	-	4
Solar energy Center	1	-	1	-	-	1	-	1	4
Grand Total	4	1	4	3	1	3	-	1	17

* working under Industries Department, yet not transfer to AJKTEVTA

Social Welfare & Women Development Department

Social Welfare & Women Development District-wise Institutions

Name of Institution	Mzd	Neelum	Bagh	Poonch	Sudhnuti	Kotli	Bhimber	Mirpur	Total
Dar-ul-Falah	01	-	01	01	-	01	-	01	05
Rural Household Education Centers	01	-	01	01	-	01	-	01	05
Kashana at Kotli	-	-	-	-	-	01	-	-	01
Kashana at Bagh	-	-	01	-	-	-	-	-	01
Shelter Homes	01	-	-	-	-	01	-	-	02
21 Women Centers	05	-	03	05	-	05	-	03	21
Establishment of Kashana at Muzaffarabad, Rawalakot, Sudhnuti, Mirpur & Bhimber	01	-	-	01	01	-	01	01	05

Source: Directorate of Social Welfare Department, Muzaffarabad.



Status of Child Protection in AJ&K 2007

Children as % of Household Size in Muzaffarabad and Bagh

Status	Muzaffarabad (No.)	%age	Bagh (No.)	%age	Total (No.)
Boys less than 18 years	326	56	237	50	563
Girls less than 18 years	256	44	241	50	499
Total	584	100	478	100	1062

% age of Corporal Punishment in Schools

Type of Punishment	Boys	Girls
Birching/ beating with cane	80	82
Beating on bottom	3	2
Make the child stand on chair	14	5
Slapping on face	2	9
Keeping the child in a uncomfortable position	1	2

Child Labour

Child Labour	Percentage
Paid Child Labour	8%
Un-Paid Domestic Servant	1%

Children without parental care

Orphan	13% (among these children 51% lost fathers, 44% has lost mothers and 5% were without both parents)
--------	--

Survey findings and focus group discussions with children on children's physical health status are as under:

- 83% of children indicated availing medical treatment twice during the last 3-6 months.
- 17% mentioned taking medical treatment at least 3 times for the same time period.
- 69% children indicated suffering from fevers.
- 11% mentioned diarrhea and dehydration.
- 20% have suffered from skin ailments.

Source: Situation Analysis on Child Protection in AJ&K 2007, Field Office, Save the Children - UK, Muzaffarabad.

Health 2007

Type	Muzaffarabad	Neelum	Mirpur	Bhimber	Kotli	Poonch	Bagh	Sudhnuti	Total
CMH	01	0	0	0	0	01	0	0	02
DHO Hospitals	0	0	01	01	01	0	01	01	05
THQ Hospitals	01	02	01	0	02	0	01	0	07
Civil Hospitals	0	0	0	0	0	0	0	01	01
TB General Hospital	0	0	0	0	0	0	01	0	01
Institute of Cardiology	0	0	01	0	0	0	0	0	01
Institute of Medical Sciences	01	0	0	0	0	0	0	0	01
Dental hospital	01	0	0	0	0	0	0	0	01
RHCs	6	1	4	3	4	6	6	3	33
BHUs	42	18	22	25	36	21	20	10	194
Dispensaries	18	3	11	13	19	8	19	9	100
FAPs	58	13	17	26	64	41	36	18	273
MCH Centers/ Services	39	11	23	15	27	24	27	11	177
TB/Leprosy Centers	13	04	8	6	9	6	14	7	67
Unani Dispensaries	02	0	02	0	5	0	2	0	11
Dental Centers	9	2	6	4	7	3	6	5	42
Teaching Inst. (Nursing School/ Paramedics Inst.)	0	0	2	0	0	0	0	0	02
EPI Centers	52	12	15	16	27	19	25	12	178
Malaria Centers	44	28	25	27	22	32	11	189	
In-Service Training Centers	01	0	01	0	0	0	01	0	03

Source: Directorate of Health, Muzaffarabad.

A. Major Minerals/ Industrial Minerals	Reservers	C. Metallic Minerals	Reservers
Graphite	1.00 million tons	Gold	In parts per billion
Limestone	195,000 million tons	Silver	In parts per billion
Gypsum	4,000 "	Copper	In parts per billion
Marble	24,000 "	Lead Zinc	small Occurrences
Coal	30,000 "	Tungsten	In small veins
Granite	15,000 "	Pyrite	Small deposit
Bentonite	8,000 "	Rare earth elements	Anomalies
Bauxite	5,000 "		
Fireclay	5,000 "	D. Precious Stone	
Dolomite	4,000 "	Ruby	39 million
Quartzite	5,000 "		
Slate	1,000 "	E. Semi Precious Stone	
Pozzolana	0,500 "	Tourmaline	Small pegmatite occurrence
Soap stone	0,050 "	Spssertine Garnet	Small pegmatite occurrence
Limonite	0,065 "	Bery	Small pegmatite occurrence
Feldspar	0,1000 "	Aqumarine	Small pegmatite occurrence
		Commercial Grade	Small pegmatite occurrence
		Quartz	occurrence

Source: Directorate of Industries, Muzaffarabad.

Police

District	Sub Division	Police Station	Police Posts		
Muzaffarabad	Muzaffarabad	Muzaffarabad			
		Sadar Muzaffarabad	Brarikot		
		Civil Secretariat	Rang		
		Garhi Dopatta	Komikot		
		Danna	Qulian & Kohalla		
		Kahori			
		Panjgran			
		Channari	Hattian Bala		
		Leepa			
		Chikaar			
Neelum	Athmuqam	Ahmuqam	Jora Bandi		
		Lawat	Kail/Halmat		
Bagh	Sharda	Sharda			
		City Bagh			
		Dhirkot	Arja, Sahlan, & Gujar Kohala		
		Kahutta	Khurshidabad		
Rawaikot	Rawaikot	City Rawlakot	Baldia Rawla Kot		
		Datoot			
		Thorar	Dhilkot		
		Abbaspur	Abbaspur		
		Hajira	Sehra, Donga Ghambir		
		Sudhnoti	Pallandri	Pallandri	Azad pattam & Baral
				Trankhal	
				Balech	Bassari
				Mang	
		Kotli	Kotli	City Kotli	Tatta Pani, Sarsawa, Qamroti
Khairatta					
Sahansa	Holar				
Nikyul					
Charohi	Kaladub				
Mirpur	Mirpur	City Mirpur			
		Tholhal			
		Mangla			
		Islamgarh			
		Azalpur			
		Dudyal	Dudyal	Dudyal	Phagallian
				Chisawari	
				City Bhimber	Pindi Chunjaa
				Chowki Samani	
		Bhimber	Barnala	Barnala	Chamb Iftikharabad
Albaig					
8	21	43	29		

Source: Police Department, Muzaffarabad.

Tourism 2007

District-wise List of Tourism Rest Houses

Rest House	No.s	Status
District Muzaffarabad		
Tourist rest house Muzaffarabad	1	Fully damaged by earthquake
Tourist rest house Pattika	1	Fully damaged by earthquake
Tourist rest house Shaheed Gali	1	Operational
Tourist rest house Pirchinassi	1	Operational
Tourist rest house Danna	1	Operational
Tourist rest house Dao Khan	1	Fully damaged by earthquake
Tourist rest house Subri	1	Fully damaged by earthquake
Tourist rest house Channian	1	Fully damaged by earthquake
District Neelum		
Tourist rest house Kutton	2	Operational
Anglers Hut Salkhala (3 Nos.)	3	Operational
Tourist rest house Neelum	1	Operational
Tourist rest house Dewarian	1	Under Repair
Tourist rest house Sharda (2Nos.)	2	Operational
Tourist rest house Nuleem (6Nos.)	6	Operational
Anglers Hut Sharda	1	Operational
Common Room Sharda	1	Operational
Snack Bar Sharda	1	Operational
District Bagh		
Tourist rest house Suddhan Gali (1)	1	Operational
Tourist rest house Suddhan Gali (2)	1	Fully damaged by earthquake
Tourist rest house Dhreekot (3Nos.)	3	Under Repair/renovation
Tourist rest house Neela Butt	1	Operational
Tourist rest house Lasdanna	1	Operational
District Poonch		
Tourist rest house Paniolla	1	Operational
Tourist rest house Rawalakot	1	Fully damaged by earthquake
Tourist rest house Koyian	1	Operational

... Continued

District-wise List of Tourism Rest Houses

Rest House	No.s	Status
<i>... continued</i>		
Tourist rest house Banjosa	1	Operational
Tourist rest house Ghorimar	1	Operational
Tourist rest house Tattapani	1	Operational
District Kotli		
Tourist rest house sarda (Kotli)	1	Operational
Tourist rest house Fatehpur	1	Under Repair/renovation
Tourist rest house Teenda	1	Operational
Tourist rest house Khoiratta	1	Fully damaged
Tourist rest house Hajjabad	1	Operational
District Mirpur		
Angler's Hut Mirpur	1	Operational
District Bhimber		
Tourist rest house Gandhi Chontra	1	Operational
Total	42	

Source: Information and Tourism Secretariat.

District-wise List of Forest Rest Houses

District	Rest House	No.s	Status
Forest Rest Houses			
Muzaffarabad	R/H Noon Bagla	5	Damaged during earthquake
	R/H Dingian		- do -
	R/H Dana		- do -
	R/H Leepa		- do -
	R/H Dao Khan		- do -
Neelum	R/H Keran	7	- do -
	R/H Dowarian		- do -
	R/H Thonian		- do -
	R/H Kuttan		- do -
	R/H Heimat		- do -
Bagh	R/H Kei		Is in working condition
	R/H Sharda		- do -
	R/H Dheer kot	4	- do -
	R/H Mahmood Gali		Damaged during earthquake
	R/H Kahutta		- do -
Sudhnuti	Dhirkot Huts		- do -
	R/H Pallandri	3	Is in working condition
	R/H Baluch		- do -
Poonch	R/H Tararkhel		- do -
	R/H Abbaspur	1	Damaged during earthquake
Kotli	R/H Sehnsa	5	Is in working condition
	R/H Senah Banah		- do -
	R/H Mansooh		- do -
	R/H Choach		- do -
	R/H Broochian		- do -
Mirpur	R/H Mirpur	1	- do - (under use Ehtasab Bureau)
Bhimber	R/H Baghsar	3	- do -
	R/HChoki (Smahni)		- do -
	R/H Bhimber		- do -
Total		29	

Source: Department of Forest, Muzaffarabad.

District-wise List of Public Works Rest Houses

District	Rest House	No.s
Public Works Rest Houses		
Muzaffarabad	SGHLohar Gali Mera Tanolian Huts	2
Neelum	R/H Athmuqam	1
Bagh	R/H Sudhangali	6
	RH Khurshidabad	
Sudhnuti	RH Mahmoodgali	
	R/H Plangi	
	Neelabut Huts (2) Nos	
	R/H Pallandri	4
Poonch	R/H Chechan	
	R/H Tararkhel	
	PWD Huts Mong	
Kotli	R/H Hajira	3
	R/H Banjosa	
Mirpur	R/H Thorar	
	R/H Kotli	2
Bhimber	R/H Fatehpur	
	R/H Mirpur	
Bhimber	R/H Dudyal	
	R/H Barnala	
Total	R/H Samahni	
		22

Source: Public Works Department, Muzaffarabad.

District-wise List of Industries Rest Houses

District	Rest House	No.s
Public Works Rest Houses		
Muzaffarabad	Nil	-
Neelum	Nil	-
Bagh	Nil	-
Sudhnuti	Nil	-
Poonch	Nil	-
Kotli	R/H Kotli	1
Mirpur	R/H Mirpur	1
Bhimber	R/H Bhimber	1
Total		3

Source: Department of Industry, Muzaffarabad.

Development Outlays
(1955 - 2011)

Allocation and Utilization

Period	Total Allocation (Rs. in million)	Utilization (Rs. in million)	%Utilization
1st Five Year Plan (1955-60)	10.000	10.000	100
2nd Five Year Plan (1960-65)	39.420	39.400	100
3rd Five Year Plan (1965-70)	88.100	88.000	99
No Plan Period (1970-78)	604.100	576.000	95
5th Five Year Plan (1978-83)	1216.800	1215.500	99
6th Five Year Plan (1983-88)	3174.000	3102.300	98
7th Five Year Plan (1988-93)	4916.000	4709.900	98
8th Five Year Plan (1993-98)	8277.300	7768.900	94
Non Plan Period (1998-2001)	6368.768	6102.848	96
Perspective Plan (2001-2011)	75968.000	N.A	-
2001-02 To 2004-05	14199.641	13136.591	93
**Mtdf (2005-10)	39700.000	-	-
2005-06	5214.341	3994.685	77
2006-07	6400.000	6008.129	96
2007-08	7800.000	-	-

**MTDF: Medium Term Development Framework.

Source: Planning & Development Department, Muzaffarabad.

Azad Jammu & Kashmir
Development Expenditure for the Year 2006 - 2007

Sector	Allocation 2006-07			Utilization 2006-07			Percentage Utilization 2006-07		
	Local	F.Aid	Total	Local	F.Aid	Total	Local	F.Aid	Total
Research & Development	21.640	0.000	21.640	21.268	0.000	21.268	98	0	98
Environment	1.000	0.000	1.000	0.990	0.000	0.990	99	0	99
Water	3.800	0.000	3.800	2.499	0.000	2.499	66	0	66
Agriculture	18.500	0.000	18.500	21.937	0.000	21.937	119	0	119
Animal Husbandry	20.000	0.000	20.000	23.847	0.000	23.847	119	0	119
Forest	200.000	0.000	200.00	178.678	0.000	178.678	89	0	89
Tourism	12.500	0.000	12.500	13.160	0.000	13.160	105	0	105
Industries	79.234	0.000	79.234	83.732	0.000	83.732	106	0	106
AKMIDC/AKSIC	27.000	0.000	27.000	24.975	0.000	24.975	93	0	93
Education/Sports	553.000	0.000	553.00	561.309	0.000	561.309	102	0	102
Health	144.432	8.037	152.469	141.232	7.551	148.783	98	94	98
Physical Planning & Housing	507.684	0.000	507.684	406.872	0.000	406.872	80	0	80
Power	930.000	0.000	930.00	929.676	0.000	929.676	100	0	100
Local Govt. & Rural Development	754.500	200.00	654.500	754.500	200.000	954.500	100	100	100
Transport & Communication	2053.710	0.000	2053.710	2053.816	0.000	2053.816	100	0	100
Foreign Aided Projects	280.000	467.963	747.963	269.223	352.900	622.023	96	75	83
Social Welfare	13.000	0.000	13.00	11.805	0.000	11.805	91	0	91
Information Technology	99.000	0.000	99.000	92.667	0.000	92.667	94	0	94
Fisheries/Wildlife	5.000	0.000	5.000	4.788	0.000	4.788	96	0	96
Total	5724.00	676.00	6400.000	5596.974	560.351	6157.325	98	83	96

Source: Planning & Development Department, Musaffarabad.

Azad Jammu & Kashmir
Development Expenditure for the Year 2006 - 2007

Department	Revised Estimates	Budget Estimates
	2006 - 2007 (Rs. in million)	2007 - 2008 (Rs. in million)
1. General Administration	971.490	1016.220
2. Stamps	5.150	5.597
3. Pension	835.000	840.000
4. Public relation	33.225	28.816
5. Armed Service	16.425	16.765
6. Judicial	157.152	165.108
7. Police	1115.196	1098.856
8. Jails	40.981	37.041
9. Civil Defence	18.988	19.368
10. Civil Works	990.476	784.824
11. Education	4884.451	4995.694
12. Health	1134.204	1128.527
13. Sports	11.864	1128.527
14. Social Welfare	73.891	38.446
15. Relief & Rehabilitation	432.469	401.668
16. Religious Affairs	41.024	42.231
17. Agriculture	173.114	42.231
18. Land Revenue	72.999	180.726
19. Animal Husbandry	176.077	177.626
20. Forests	221.226	278.317
21. Cooperative	21.928	22.638
22. Electricity	3630.380	3726.093
23. Local Government	92.838	98.407
24. Industries	50.437	34.844
25. Printing Press	20.557	20.435
26. Sericulture	22.913	23.424
27. Tourism /Wild Life	33.710	38.256
28. Miscellaneous	670.050	1433.894
29. Food	48.747	91.552
30. State Trading	782.938	741.900
Total	16780.600	17520.000

**Budget 2007 -2008
Total General Revenue Receipts in AJ&K
2006-07 & 2007-08**

Department	Revised Estimates	Budget Estimates
	2006 - 2007 (Rs. in million)	2007 - 2008 (Rs. in million)
1. Provincial Excise	1100.000	1200.000
2. Land Revenue	191.000	10.000
3. Stamps	113.300	115.200
4. Forests	158.100	200.000
5. Registration	2.300	2.500
6. Judicial	8.600	10.000
7. Jails	0.120	0.150
8. Police	21.700	30.000
9. Education	41.700	45.000
10. Health	4.700	6.000
11. Agriculture	1.900	2.000
12. Animal Husbandry	3.200	4.300
13. Cooperative	0.020	0.020
14. Industry	9.100	9.200
15. Sericulture	0.500	0.500
16. Miscellaneous	118.235	48.000
17. Public Works	130.300	60.000
18. Electricity	3000.000	3400.000
19. Printing Press	1.500	6.000
20. Armed Service Board	5.965	5.000
21. Religious Affairs	9.800	10.900
22. Food	37.700	65.000
23. Tourism/Wide life	0.260	0.230
Total	4960.000	5230.000
24. Water Usage Charges Mangla	663.300	663.300
25. Income from Kashmir Council	2272.000	2272.000
26. Federal Tac Share	3317.000	4400.000
27. Revenue Deficit	3478.080	3050.000
28. Domestic Borrowing	2090.220	1904.700
Total (24-27)	11820.600	12290.000
G. Total	16780.000	17520.000

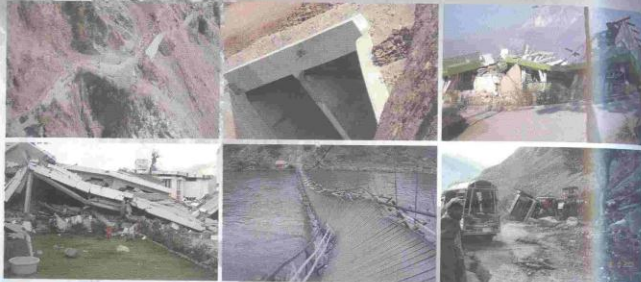
Source: Finance Department, Muzaffarabad.

**Vital Statistics
AJ&K and Pakistan**

Description	AJ&K	Pakistan
Area (Sq.km)	13,297	796,096
Cultivated land (%)	13	28
Area under productive forest (%)	11.6	5.03
Villages	1646	48344
Population (projected in million)	3.682	155.37
Population Growth Rate (%)	2.41	1.9+
Unemployment Rate (%)	6.5	6.5
Literacy (%)	64	54
Enrolment rate Primary BOYS (%)	95	94
Enrolment rate Primary GIRLS (%)	88	77
Road density (km/sq. km)	0.41	0.32
Infant mortality (per 1000)	56	77+
Population per hospital bed	1975	1516
Population per doctor	5885	1305
Immunization Coverage (%)	95	93
Per capita power availability (KWH)	326	247
Rural/Urban ratio	88:12	67:33
Population density per sq. Km.	277	194
Per capita income (per annum) US\$	908	908

Source: (i) Federal Bureau of Statistics, Islamabad.
(ii) Departments of Health, Education & Public Works, Muzaffarabad.

2005 Earthquake Damages



Important Statistics

Affected area (Sq Km)	7000
Population affected (Million)	1.8
Villages affected	977
Houses Damaged	3,14,474
Deaths	46,570
Injured	33,136
Estimated Losses in Private Sector:	Rs. 60.875 Billion
Estimated Damages in Public Sector:	Rs. 64.328 Billion

Total Rs. 125.203 Billion

A. Losses to Civil Society

Sector	Damages (Rs. In Billion)
Private Housing	50.000
Economic Assets	10.875
Total	60.875

Source: SERRA, Muzaffarabad.

A. Deaths/Injured/Houses

District	Deaths	Injured	Houses (Uninhabitable) Damaged/ Destroyed
Neelum	470	624	13,963
Muzaffarabad	35,803	23,138	146,798
Bagh	9,167	7,466	95,516
Poonch	1,120	1,883	55,307
Sudhnuti	04	25	2,890
Mirpur	06	0	---
Total	46,570	33,136	314,474

Public Sector Damages

Sector	Damages (Rs. In Billion)	Estimated Cost
1. Transport Communication	810 km roads & 2725 meter bridges	6.140
2. PP&H	806 Nos official accommodation with 2050385 sft	5.153
3. LG&RD	Rural access roads (1809 km), jeep able bridges (18), foot bridges (56) & rural water supply & solid waste (1630)	4.988
4. Education	Reconstruction of 2706 education institutions including 1852 primary, 498 middle, 298 high/ higher secondary schools, 20 inter, 12 degree colleges, 6 post graduate colleges & 1 university	28.239
5. Health	Recont. of 176 health institutions including 47 civil Dissp., 96 BHUs, 15 RHCs, 4 THQs, 2 CMHs, 2 DHQs, Jinnah Dentall Hospital, 1 Chest Disease Hospital & AIMS	5.926
6. Electricity	Repair of hydel stations & rehabilitation of electrical damaged infrastructure	0.839
7. HEB		0.105
8. Environment	Natural Resource Management, Socio Economic Dev.	1.394
9. Livelihood	Infra. Reconst. Capacity building, Impl. of Village Plans	1.577
10. Others	(Industries, Tourism, Agriculture)	9.967
Total		64.328

Source: SERRA, Musaffarabad.

Education Sector Damages

Institutions	Pre-Earthquake	Damaged/ Destroyed
Primary Schools	4228	1852
Middle Schools	1032	507
High Schools	606	275
H.S. Schools/ Colleges	138	66
University Colleges	05	02
University	01	01
Cadet Colleges	01	00
College of Education	02	01
Model Science College	03	01
Elementary College	10	03
Education Extension Center	01	01
Agro-Tech	01	01
Total	6019	2706

Source: SERRA, Musaffarabad.

Education Sector Damages

Facilities	Pre-Earthquake	Damaged/ Destroyed
FAPs	269	128
Dispensaries	100	47
BHUs	194	96
RHCs	32	15
MCH Centers	177	84
TB/Leprosy Centers	67	31
THQ Hospitals	08	05
DHQ Hospitals	05	02
CMHs	02	02
AIMS	01	01
Total	835	410

Governance Sector

Category	Damage (Covered Area in Sft.)
PPH Sector Buildings	1,479,430
Other Sector buildings	766,999

Transport and Communication Damages

Type	Total Length	Damaged (Km.)
Metalled Roads	4852	856
Fair weather (PWD) & LG&RDD	6116	949
Bridges (PWD)	Numbers	Numbers
RCC	152	67
Bailey	59	15
Suspension	1	3
Bridges (LG&RDD)	130	19

Water Supply Sector

Damages	Total (Nos.)	Damaged/Destroyed	%age
i) Urban Water Supply	23	10	43%
ii) Rural water Supply	6,500	1,603	25%
Total	6,523	1,613	25%

Power Sector

Facility	Pre-Earthquake	Damaged/Destroyed
Electric Connections	390,747	77,284
Hydel Stations	06	05
HT lines (KM)	7,677	1,408
LT lines (KM)	12,565	3,273
Grid Stations	19	05
Transformers	7,250	928

Damages of Agriculture Sector

Particulars	Unit	Qty	Damages Unit Cost	Amount (Rs. In Million)
1. Land Terraces	Hactres	3,013	0.03	90.400
2. Protection bunds	Cubic Meters	20,000	Nil	Nil
3. Storage lost	Acres	150,000	0.013	1963.600
4. Agril.Inputs	Acres	150,000	Nil	Nil
5. Damages to fruit orchards	No	15,033	0.005	225.200
5.1 Fruit Plant Nurseries	Hactres	12	Nil	Nil
5.2 Planting Fruit Trees	No	90,000	Nil	Nil

Crop Sector Damages

Category	Estimated Value of Losses (Million Rs.)
Field Terraces	201.000
Fruit Plant Damages	225.000
Research and Extension building damages	458.000
Storage lost at farm level	1964.000
Crop productivity loses	744.000
Irrigation infrastructure damages	240.000
Other damages	3832.000
Total	7664.000

Animal Husbandry Department (Public Sector)

Particulars	Damages Estimates			Amount (Rs. In Million)
	Unit	Qty	Unit Cost	
Civil Work (Offices, Residences,	Sft	229845	1000	229.845
Labs, Poultry Sheds, Hatcheries),				
Office/Lab Equipments	L/S	-	-	4.180
Total				273.025

Animal Husbandry Department (Public Sector)

Particulars	Damages Estimates			Amount (Rs. In Million)
	Unit	Qty	Unit Cost (Average)	
Animal death/ replacement				
(i) Cattle	No	81,939	28780	2358.234
(ii) Buffalo	No	55,239	37294	2060.109
(iii) Goat/Sheep	No	88,427	40000	353.700
Animal Productivity (Survived Cattle and Buffalo)	No	3,83,332	-	3600.100
Animal Sheds (Gawals)	House Hold	1,30,908	24000	3141.800
Poultry Birds	No	2,67,105	-	48.100
Total				11,562.043

State Forest Damages

Districts	Forest Area (AC)	Badly Effected Forest Area (AC)
Neelum	6,77,258	86,413
Muzaffarabad	2,18,168	1,65,808
Bagh	1,56,075	78,038
Poonch	65,240	32,000
Sudhnuti	55,520	10,000
Total	11,72,441	3,72,250

Tourism Sector Damages

Districts	No. of Rest Houses	Damaged	Damaged (Cover in area Sq.M)
Muzaffarabad	08	08	21,802
Neelum	08	04	15,913
Bagh	04	04	13,814
Poonch	06	04	10,247
Kotli	04	02	4,100
Total	30	22	46,256

IT Sector

Facility	Pre-Earthquake	Damaged/Destroyed
Computer lab in Colleges	36	17
Computer lab in High Schools	47	24
IT Training Centers	07	03
Govt. Employees Training Institutes	02	01
Total	92	45

Rescue & Relief Operations

World's biggest rescue and relief operations started within hours of the occurrence of the earthquake

- 50 helicopters deployed
- Generated 19,000 sorties

People initially migrated to Camps (Total No.) 116,512
Camps established (Total No.) 125

Relief items distributed:

- i. Medicines 855.2 tons
- ii. Rations 75,962 tons
- iii. Blankets 1.91 million
- iv. G.I sheets 6,000 million
- v. Tents 0.400 million
- vi. The relief goods provided by the NGOs/Civil Society are uncountable.

- All primary and secondary roads were opened, communication and power restored.
- Averted additional deaths from exposure to severe climatic condition, hunger and disease

Governance

The administrative structure in the districts of Muzaffarabad, Neelum, Bagh, Poonch and Sudhnuti were disrupted by the destruction of administrative complexes. The majority of buildings, both offices and residences were destroyed or damaged, including the civil secretariat and the Supreme Court. Governance sector strategy aimed at reconstruction and rehabilitation of all damaged building of Government department has been finalized and approved by ERRRA Council.

Power

The Power sector was severely damaged by the earthquake. However most of the damage structure was repaired on urgent basis. Distribution and retail services delivery infrastructure were the most damaged by the earthquake. Power sector strategy has been approved for reconstruction of damaged infrastructure.

Roads/Transports

The earthquake caused severe damage to the transport system in the affected areas of AJ&K. It is estimated that 2551 Km of roads were partially or fully damaged in AJ&K. The poor state of roads is one of the largest challenges facing reconstruction programme. Transport sector strategy for reconstruction & rehabilitation has been finalized and approved by the competent forum.

Telecommunication

In the telecommunication sector, the key organizations in the earthquake affected areas are mainly PTCL and SCO. Telecommunication sector has been finalized and approved by the ERRRA Council.

Social Protection

Although the entire population affected by the earthquake is vulnerable, the social protection program focused specifically on the groups which are at the greatest risk. Social protection strategy for reconstruction & rehabilitation has been finalized.

Environment

The most visible affected the earthquake had on the environment is the land-shearing, liquefaction, and slides that occurred as a consequence of the

earthquake. The earthquake destroyed water channels; resulted in the siltation of some rivers and streams; deteriorated forest resources; caused massive destruction to farm land, especially terraced land situated on steep terrain; and destroyed many fish farms. The disposal of massive amounts of debris from fallen structures is a significant environmental challenge.

Tourism Sector

The vast majority of hotels and other tourist infrastructure were destroyed by the earthquake. It is yet to be formulated a policy approach for the reconstruction and rehabilitation of the tourism sector.

Urban Development: Master Plan for 3 cities (Muzaffarabad, Bagh & Rawalakot) prepared. City Development Projects for these three cities costing Rs. 21.136 billion, 7349.76 million and 8202.60 million respectively are approved. Moreover, natural gas is also being provided to these three cities as part of Reconstruction Programme.

Overall Disbursement of Housing Cash Grant for Rural and Urban Houses

District	Rural (@ 50,000)		Urban (@ 50,000)		G. Total	
	Beneficiaries	Amount	Beneficiaries	Amount	Beneficiaries	Amount
1st Installment	-	-	-	-	314,474	7,862
2nd Installment	281377	20,472	25,386	2,091	306,763	22,563
3rd Installment	224086	5,602	-	-	224,086	5,602
4th Installment	121310	6,066	16,093	0,805	137,403	6,870
G.Total		32,140		2,896		42,897

Payments for Injured/Deaths/Multiple Deaths

District	Injured (33,136)	Amount	Deaths (46,570)	Amount	Total Amount Paid
Muzaffarabad	21,906	453,805	34,284	3428,400	3882,205
Bagh	7,440	159,525	9,366	936,600	1096,125
Rawalakot	1,884	38,695	1,117	111,700	150,395
Sudhnoti	25	0,545	4	0,400	0,945
Neelum	552	12,205	446	44,600	56,805
Mirpur	--	--	6	0,600	0,600
Total	31807	664,775	45,223	4522,300	5187,075

Disbursement of Livelihood Support Cash Grant (Completed)

District	Beneficiaries	Amount Paid (Rs. in Million)
Muzaffarabad	54,040	1070,469
Bagh	38,884	781,488
Poonch	30,930	622,926
Sudhnoti	3,183	65,502
Neelum	5,247	106,326
Total	132,284	2646,711

Overall Disbursement of Housing Cash Grant for Rural and Urban Houses

Sector	Total Projects (Institutions /Buildings)	PC-1 Approved	Project Progress			Completed
			Tender	Work Awarded	Work Started	
Education	2,225	1,584	820	658	634	72
Health	159	70	67	58	37	8
Watson	2,862	1,560	1,090	1,058	1,020	983
T&C						
Roads (286.446 km)	29	27	25	16	12	-
Bridges	53	52	51	-	-	-
Sub Total	82	79	76	16	12	-
Power	7	7	7	7	7	1
Environment	108	108	2	2	2	0
Governance	489	70	33	22	22	-
Livelihood	258	16	4	-	-	-
Telecommunication	4	4	4	4	4	4
Social Protection	16	7	7	7	7	3
Urban Development	3	-	-	-	-	3
Total	6,213	3,505	2,110	1,832	1,745	1,074